

Direct-Fired **Air-Turnover** Indirect-Fired Infrared Unit Heaters Duct Furnaces Cooling



7500-Series

RapidTM *Engineering* LLC

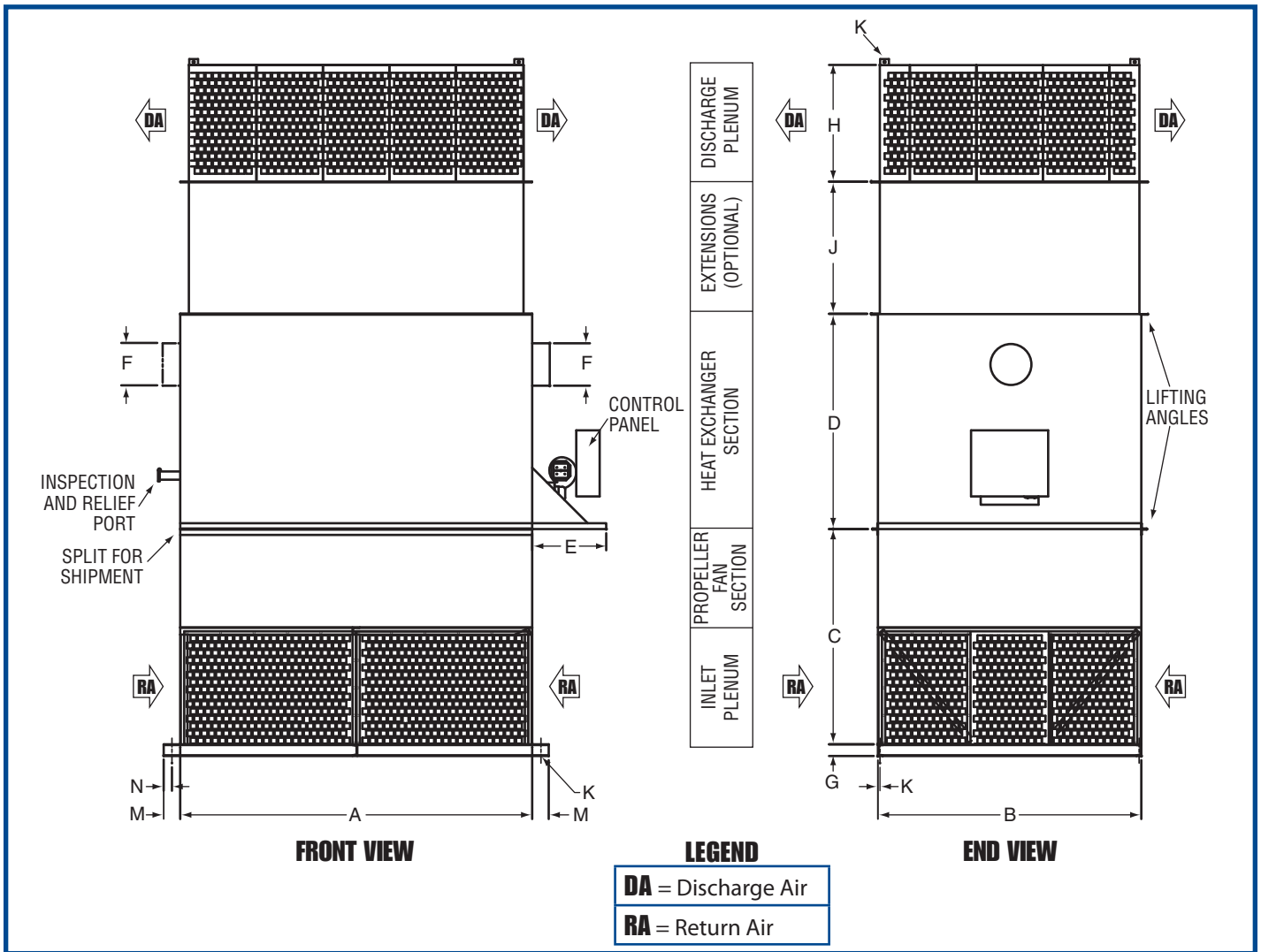
Indirect-Fired Air Turnover Units Dimension and Selection Guide



1.800.536.3461
www.rapidengineering.com



7500-Series Heating Unit



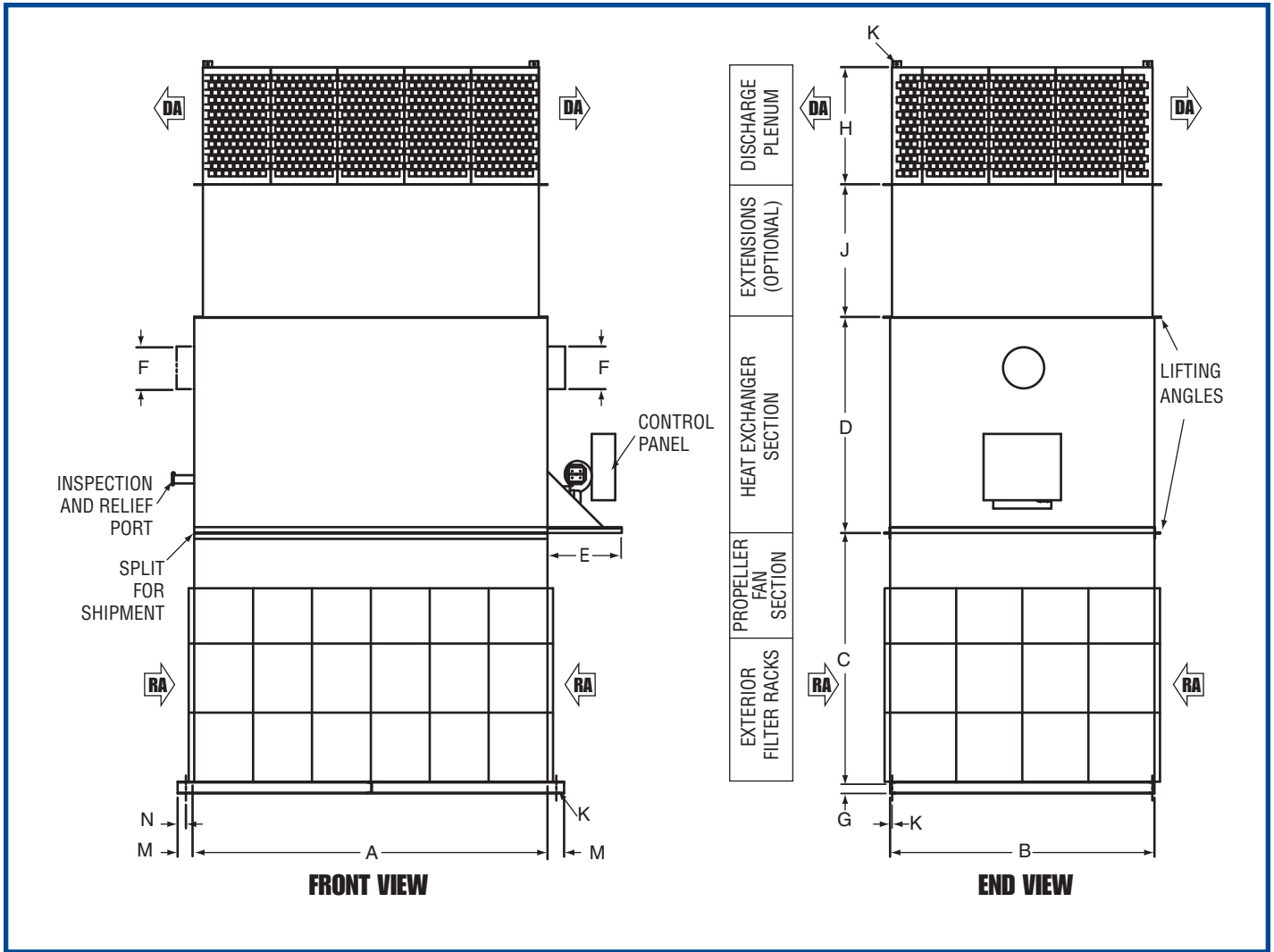
DIMENSIONS

	7500-136		7500-148		7500-154		7500-236		7500-242		7500-248		7500-254		7500-260		7500-272	
	in	cm	in	cm	in	cm	in	cm	in	cm	in	cm	in	cm	in	cm	in	cm
A	60	152.4	72	182.8	85	215.9	90	228.6	100	254.0	116	294.6	145	368.3	160	406.4	165	419.1
B	50	127.0	60	152.4	72	182.8	50	127.0	55	139.7	60	152.4	72	182.8	84	213.3	90	228.6
C	75	190.5	75	190.5	86	218.4	60	152.4	66	167.6	66	167.6	72	182.8	72	182.8	76	193.0
D	53	134.6	53	134.6	65	165.1	53	134.6	75 - 53 100 - 53 125 - 72	134.6 134.6 182.8	75 - 53 100 - 53 125 - 72 150 - 72 175 - 72	134.6 134.6 182.8 182.8 182.8	90	228.6	96	243.8	96	243.8
E	35	88.9	35	88.9	35	88.9	35	88.9	35	88.9	35	88.9	35	88.9	35	88.9	35	88.9
F	45 - 6 75 - 6 100 - 8	15.2 15.2 20.3	45 - 6 75 - 6 100 - 8	15.2 15.2 20.3	45 - 6 75 - 6 100 - 8 125 - 10	15.2 15.2 20.3 25.4	45 - 6 70 - 6 100 - 8	15.2 15.2 20.3	75 - 6 100 - 8 125 - 10	15.2 20.3 25.4	75 - 6 100 - 8 125 - 10 175 - 12	15.2 20.3 25.4 30.4	175 - 12 225 - 12 300 - 14	30.4 30.4 35.5	300 - 14 450 - 16	35.5 40.6	300 - 14 450 - 16	35.5 40.6
G	3	7.62	3	7.6	3	7.62	3	7.6	3	7.6	3	7.6	4	10.1	4	10.1	4	10.1
H	24	60.9	24	60.9	36	91.4	24	60.9	30	76.2	30	76.2	36	91.4	36	91.4	40	101.6
J	48	121.9	48	121.9	48	121.9	48	121.9	48	121.9	48	121.9	48	121.9	48	121.9	48	121.9
K	.75	1.9	.75	1.9	.75	1.9	.75	1.9	.75	1.9	.75	1.9	.75	1.9	.75	1.9	.75	1.9
M	6	15.2	6	15.2	6	15.2	6	15.2	6	15.2	6	15.2	6	15.2	6	15.2	6	15.2
N	3	7.6	3	7.6	3	7.6	3	7.6	3	7.6	3	7.6	3	7.6	3	7.6	3	7.6

IMPORTANT NOTES:

- All dimensions are subject to change without notice.
- Due to height of unit, additional support is recommended on top of the unit.
- Dimensions "D" and "F" may vary depending on heat exchanger size (ex. 45 = 450 MBH heat exchanger).
- Dimension "F" is flue diameter. Flue located on left side of unit for 1,000 MBH heat exchanger and smaller; flue located on right side of unit for 1,250 MBH heat exchanger and larger.

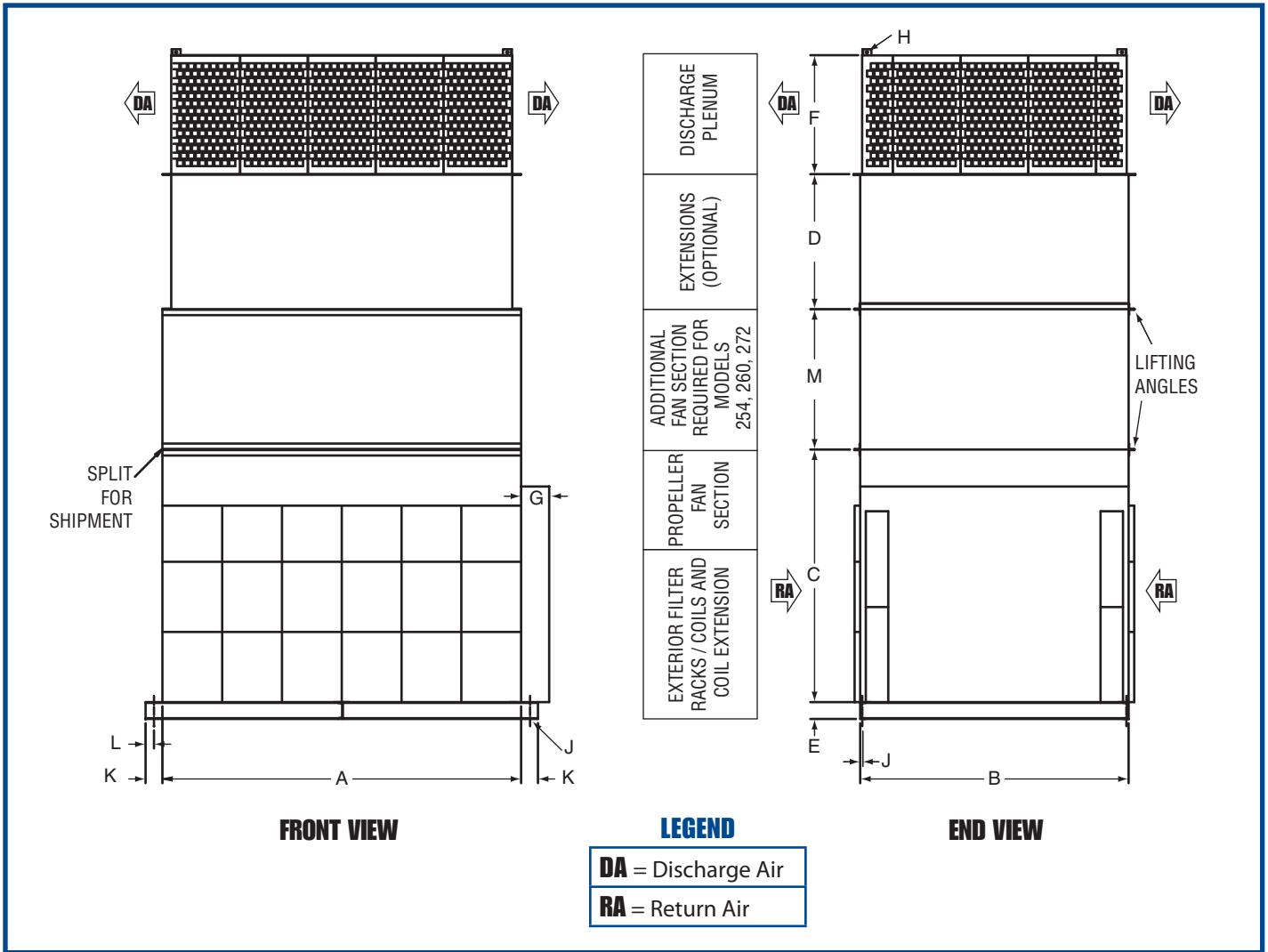
7500-Series Heating Unit with Filtration



DIMENSIONS

	7500-136		7500-148		7500-154		7500-236		7500-242		7500-248		7500-254		7500-260		7500-272	
	in	cm	in	cm	in	cm	in	cm	in	cm	in	cm	in	cm	in	cm	in	cm
A	60	152.4	72	182.8	85	215.9	90	228.6	100	254.0	116	294.6	145	368.3	160	406.4	165	419.1
B	50	127.0	60	152.4	72	182.8	50	127.0	55	139.7	60	152.4	72	182.8	84	213.3	90	228.6
C	75	190.5	85	216.0	95	241.3	85	216.0	85	216.0	95	241.3	90	228.6	90	228.6	90	228.6
D	53	134.6	53	134.6	65	165.1	53	134.6	75 - 53 100 - 53 125 - 72	134.6 134.6 182.8	75 - 53 100 - 53 125 - 72 150 - 72 175 - 72	134.6 134.6 182.8 182.8 182.8	90	228.6	96	243.8	96	243.8
E	35	88.9	35	88.9	35	88.9	35	88.9	35	88.9	35	88.9	35	88.9	35	88.9	35	88.9
F	45 - 6 75 - 6 100 - 8	15.2 15.2 20.3	45 - 6 75 - 6 100 - 8	15.2 15.2 20.3	45 - 6 75 - 6 100 - 8 125 - 10	15.2 15.2 20.3 25.4	45 - 6 75 - 6 100 - 8	15.2 15.2 20.3	75 - 6 100 - 8 125 - 10	15.2 20.3 25.4	75 - 6 100 - 8 125 - 10 175 - 12	15.2 20.3 25.4 30.4	175 - 12 225 - 12 300 - 14	30.4 30.4 35.5	300 - 14 450 - 16	35.5 40.6	300 - 14 450 - 16	35.5 40.6
G	3	7.6	3	7.6	3	7.6	3	7.6	3	7.6	3	7.6	4	10.1	4	10.1	4	10.1
H	24	60.9	24	60.9	36	91.4	24	60.9	30	60.9	30	60.9	36	91.4	36	91.4	40	101.6
J	48	121.9	48	121.9	48	121.9	48	121.9	48	121.9	48	121.9	48	121.9	48	121.9	48	121.9
K	.75	1.9	.75	1.9	.75	1.9	.75	1.9	.75	1.9	.75	1.9	.75	1.9	.75	1.9	.75	1.9
M	6	15.2	6	15.2	6	15.2	6	15.2	6	15.2	6	15.2	6	15.2	6	15.2	6	15.2
N	3	7.6	3	7.6	3	7.6	3	7.6	3	7.6	3	7.6	3	7.6	3	7.6	3	7.6

7500-Series Cooling Unit with Filtration



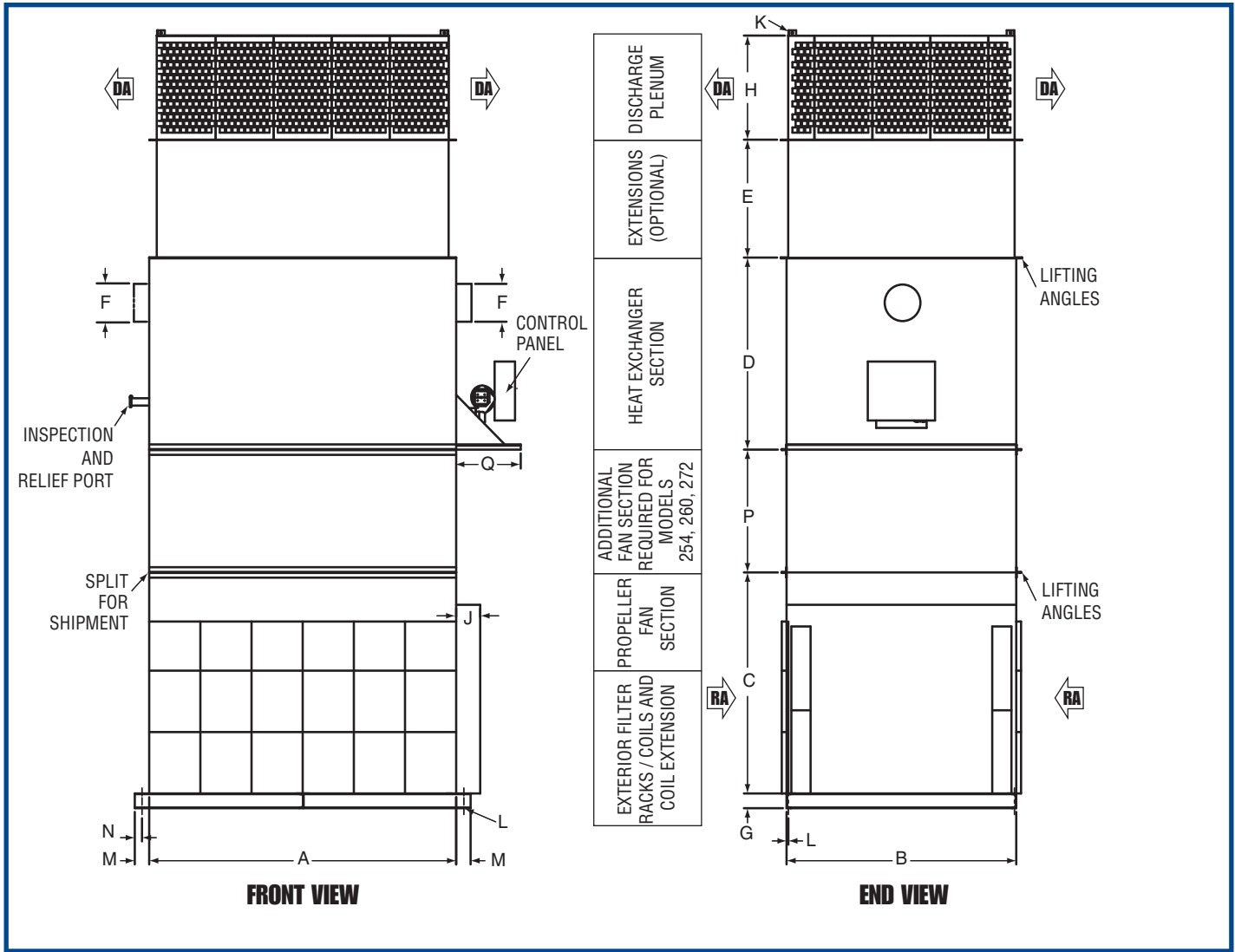
DIMENSIONS

	7500-136		7500-148		7500-154		7500-236		7500-242		7500-248		7500-254		7500-260		7500-272	
	in	cm	in	cm	in	cm	in	cm	in	cm	in	cm	in	cm	in	cm	in	cm
A	60	152.4	72	182.8	85	215.9	90	228.6	100	254.0	116	294.6	145	368.3	160	406.4	165	419.1
B	50	127.0	60	152.4	72	182.8	50	127.0	55	139.7	60	152.4	72	182.8	84	213.3	90	228.6
C	75	190.5	85	215.9	95	241.3	85	215.9	85	215.9	95	241.3	90	228.6	90	228.6	90	228.6
D	48	121.9	48	121.9	48	121.9	48	121.9	48	121.9	48	121.9	48	121.9	48	121.9	48	121.9
E	6	15.2	6	15.2	6	15.2	6	15.2	6	15.2	6	15.2	6	15.2	6	15.2	6	15.2
F	24	60.9	24	60.9	36	91.4	24	60.9	30	76.2	30	76.2	36	91.4	36	91.4	40	101.6
G	N/A	N/A	N/A	N/A	10	25.4	10	25.4	16	40.6	6	15.2	N/A	N/A	N/A	N/A	10	25.4
H	.75	1.9	.75	1.9	.75	1.9	.75	1.9	.75	1.9	.75	1.9	.75	1.9	.75	1.9	.75	1.9
J	.75	1.9	.75	1.9	.75	1.9	.75	1.9	.75	1.9	.75	1.9	.75	1.9	.75	1.9	.75	1.9
K	6	15.2	6	15.2	6	15.2	6	15.2	6	15.2	6	15.2	6	15.2	6	15.2	6	15.2
L	3	7.6	3	7.6	3	7.6	3	7.6	3	7.6	3	7.6	3	7.6	3	7.6	3	7.6
M	N/A	N/A	N/A	N/A	N/A	N/A	N/A	N/A	N/A	N/A	N/A	N/A	50	127.0	50	127.0	50	127.0

IMPORTANT NOTES:

- All dimensions are subject to change without notice.
- Due to height of unit, additional support is recommended on top of unit.

7500-Series Heating and Cooling Unit with Filtration



DIMENSIONS

	7500-136		7500-148		7500-154		7500-236		7500-242		7500-248		7500-254		7500-260		7500-272	
	in	cm	in	cm	in	cm	in	cm	in	cm	in	cm	in	cm	in	cm	in	cm
A	60	152.4	72	182.8	85	215.9	90	228.6	100	254	116	294.6	145	368.3	160	406.4	165	419.1
B	50	127	60	152.4	72	182.8	50	127	55	139.7	60	152.4	72	182.8	84	213.3	90	228.6
C	75	190.5	85	215.9	95	241.3	85	215.9	85	215.9	95	241.3	90	228.6	90	228.6	90	228.6
D	53	134.6	53	134.6	65	165.1	53	134.6	75 - 53 100 - 53 125 - 72	134.6 134.6 182.8	75 - 53 100 - 53 125 - 72 150 - 72 175 - 72	134.6 134.6 182.8 182.8 182.8	90	228.6	96	243.8	96	243.8
E	48	121.9	48	121.9	48	121.9	48	121.9	48	121.9	48	121.9	48	121.9	48	121.9	48	121.9
F	45 - 6 75 - 6 100 - 8	15.2 19.0 25.4	45 - 6 75 - 6 100 - 8	15.2 19.0 25.4	45 - 6 75 - 6 100 - 8 125 - 10	15.2 19.0 25.4 25.4	45 - 6 75 - 6 100 - 8	15.2 19.0 25.4	75 - 6 100 - 8 125 - 10	15.2 20.3 25.4	75 - 6 100 - 8 125 - 10 175 - 12	15.2 20.3 25.4 30.4	175 - 12 225 - 12 300 - 14	30.4 30.4 35.5	300 - 14 450 - 16	35.5 40.6	300 - 14 450 - 16	35.5 40.6
G	6	15.2	6	15.2	6	15.2	6	15.2	6	15.2	6	15.2	6	15.2	6	15.2	6	15.2
H	24	60.9	24	60.9	36	91.4	24	60.9	30	76.2	30	76.2	36	91.4	36	91.4	40	101.6
J	N/A	N/A	N/A	N/A	10	25.4	10	25.4	16	40.6	6	15.2	N/A	N/A	N/A	N/A	10	25.4
K	.75	1.9	.75	1.9	.75	1.9	.75	1.9	.75	1.9	.75	1.9	.75	1.9	.75	1.9	.75	1.9
L	.75	1.9	.75	1.9	.75	1.9	.75	1.9	.75	1.9	.75	1.9	.75	1.9	.75	1.9	.75	1.9
M	6	15.2	6	15.2	6	15.2	6	15.2	6	15.2	6	15.2	6	15.2	6	15.2	6	15.2
N	3	7.6	3	7.6	3	7.6	3	7.6	3	7.6	3	7.6	3	7.6	3	7.6	3	7.6
P	N/A	N/A	N/A	N/A	N/A	N/A	N/A	N/A	N/A	N/A	N/A	N/A	50	127	50	127	50	127
Q	35	88.9	35	88.9	35	88.9	35	88.9	35	88.9	35	88.9	35	88.9	35	88.9	35	88.9

7500-Series Estimated Shipping Weights

Estimated Shipping Weights - Burners (All Models)

GAS BURNER	Input (MBH)	300-625	626-938	939-1250	1251-1875	1876-2500	2501-3125	3126-5000
	Weight (lbs)	155	190	230	290	300	340	340
Weight (kg)	70.2	86.1	104.2	131.4	135.9	154.0	154.0	

#2 OIL BURNER	Input (GPH)	2.5-4.5	4.6-6.7	6.8-8.9	9.0-13.4	13.5-17.9	18-22	22.1-36
	Weight (lbs)	125	125	220	220	310	360	385
Weight (kg)	56.6	56.6	99.7	99.7	140.4	163.1	174.4	

COMBINATION GAS / #2 OIL BURNER	Input (MBH)	300-625	626-938	939-1250	1251-1875	1876-2500	2501-3125	3126-5000	
	Input (GPH)	2.5-4.5	4.6-6.7	6.8-8.9	9.0-13.4	13.5-17.9	18-22	22.1-36	
	Weight (lbs)	200	240	270	360	400	450	500	
	Weight (kg)	90.6	108.7	122.3	163.1	181.2	203.9	226.5	

IMPORTANT NOTES:

- All weights are subject to change without notice.
- To determine total unit weight, add the appropriate burner weight to the appropriate base unit weight (as listed in performance information tables).

7500-Series Selection Guide

To create a complete air turnover unit, choose one base unit and one burner/manifold package using the tables on the following pages. Prices apply for natural gas or LPG units.

1. Choosing A Base Unit Package

Base Unit Package choice is based on model choice. First, locate the correct set of tables on the following pages which correspond to the required type of unit. Locate airflow and heat output requirements on the appropriate set of tables to determine the unit model. If more than one model is applicable, choose the smaller model.

Btu/h Output Required = CFM * 1.08 * Temperature Rise

MBH = Btu/h / 1,000

2. Choosing A Burner/Manifold Package

Choose Burner/Manifold Package based on input, burner type and insurance requirements. Choose a Burner/Manifold Package that can fulfill the maximum output of the model. Note that burner INPUTS are listed rather than outputs.

Burner Input = Burner Output / .8

Tables A: Air Turnover Heating Unit Performance Information

(Additional configurations are available upon request.)

7500-136

Airflow (CFM)	Motor (HP) (1 motor)	Minimum Output (MBH)	Maximum Output (MBH)	Temp. Rise Range (°F)	Temp. Rise Range (°C)	Base Unit Weight (lbs)	Base Unit Weight (kg)
4,500	1	240	240	49 to 49	9.4 to 9.4	2,225	1,007.9
9,000	2	240	450	25 to 46	-3.9 to 7.8	2,280	1,032.8
12,000	3	240	450	19 to 35	-7.2 to 1.7	2,305	1,044.2

7500-148

Airflow (CFM)	Motor (HP) (1 motor)	Minimum Output (MBH)	Maximum Output (MBH)	Temp. Rise Range (°F)	Temp. Rise Range (°C)	Base Unit Weight (lbs)	Base Unit Weight (kg)
10,000	3	240	450	22 to 42	-5.6 to 5.6	3,255	1,474.5
16,000	3	240	750	14 to 43	-10 to 6.1	3,300	1,494.9

7500-154

Airflow (CFM)	Motor (HP) (1 motor)	Minimum Output (MBH)	Maximum Output (MBH)	Temp. Rise Range (°F)	Temp. Rise Range (°C)	Base Unit Weight (lbs)	Base Unit Weight (kg)
14,000	3	240	450	16 to 30	-8.9 to -1.1	3,880	1,757.6
22,000	5	240	750	10 to 32	-12.2 to 0	3,940	1,784.8
30,000	7.5	520	1,000	16 to 31	-8.9 to -0.6	4,115	1,864.1
30,000	7.5	560	1,250	17 to 39	-8.3 to 3.9	4,220	1,911.7

7500-236

Airflow (CFM)	Motor (HP) (1 motor)	Minimum Output (MBH)	Maximum Output (MBH)	Temp. Rise Range (°F)	Temp. Rise Range (°C)	Base Unit Weight (lbs)	Base Unit Weight (kg)
9,000	1	240	450	25 to 46	-3.9 to 7.8	3,945	1,787.1
18,000	2	240	750	12 to 39	-11.1 to 3.9	3,990	1,807.5
24,000	3	520	1,000	20 to 39	-6.7 to 3.9	4,115	1,864.1

7500-242

Airflow (CFM)	Motor (HP) (2 motors)	Minimum Output (MBH)	Maximum Output (MBH)	Temp. Rise Range (°F)	Temp. Rise Range (°C)	Base Unit Weight (lbs)	Base Unit Weight (kg)
21,000	2	240	750	11 to 33	-11.7 to 0.6	4,990	2,260.5
31,000	3	520	1,000	16 to 30	-8.9 to -1.1	5,115	2,317.1
31,000	3	560	1,250	17 to 37	-8.3 to -2.8	5,240	2,373.7

7500-248

Airflow (CFM)	Motor (HP) (2 motors)	Minimum Output (MBH)	Maximum Output (MBH)	Temp. Rise Range (°F)	Temp. Rise Range (°C)	Base Unit Weight (lbs)	Base Unit Weight (kg)
22,000	3	240	750	10 to 32	-12.2 to 0.0	5,990	2,713.5
35,000	5	520	1,000	14 to 26	-10.0 to -3.3	6,145	2,783.7
45,000	5	560	1,250	12 to 26	-11.1 to -3.3	6,270	2,840.3
45,000	5	560	1,500	12 to 31	-11.1 to -0.6	6,270	2,840.3

7500-254

Airflow (CFM)	Motor (HP) (2 motors)	Minimum Output (MBH)	Maximum Output (MBH)	Temp. Rise Range (°F)	Temp. Rise Range (°C)	Base Unit Weight (lbs)	Base Unit Weight (kg)
40,000	5	560	1,750	13 to 41	-10.6 to 5.0	7,670	3,474.5
60,000	7.5	600	2,250	9 to 35	-12.8 to 1.7	8,060	3,651.2
65,000	7.5	600	2,500	9 to 36	-12.8 to 2.2	8,310	3,764.4

7500-260

Airflow (CFM)	Motor (HP) (2 motors)	Minimum Output (MBH)	Maximum Output (MBH)	Temp. Rise Range (°F)	Temp. Rise Range (°C)	Base Unit Weight (lbs)	Base Unit Weight (kg)
54,000	5	600	3,000	10 to 51	-12.2 to 10.0	10,870	4,924.1
61,000	7.5	720	4,000	11 to 61	-11.7 to 10.0	11,135	5,044.2
74,000	7.5	720	4,000	9 to 50	-12.8 to 10.0	11,135	5,044.2

7500-272

Airflow (CFM)	Motor (HP) (2 motors)	Minimum Output (MBH)	Maximum Output (MBH)	Temp. Rise Range (°F)	Temp. Rise Range (°C)	Base Unit Weight (lbs)	Base Unit Weight (kg)
62,000	5	600	3,000	9 to 45	-12.8 to 7.2	11,720	5,309.2
88,000	10	720	4,500	8 to 47	-13.3 to 8.3	12,185	5,519.8
100,000	10	720	4,500	7 to 42	-13.9 to 5.6	12,185	5,519.8

Tables B: Air Turnover Heating Unit with Filtration Performance Information

(Additional configurations are available upon request.)

7500-136

Airflow (CFM)	Motor (HP) (1 motor)	Minimum Output (MBH)	Maximum Output (MBH)	Temp. Rise Range (°F)	Temp. Rise Range (°C)	Base Unit Weight (lbs)	Base Unit Weight (kg)
4,500	1	240	240	49 to 49	9.4 to 9.4	2,425	1,098.5
9,000	3	240	450	25 to 46	-3.9 to 7.8	2,505	1,134.8
12,000	5	240	450	19 to 35	-7.2 to 1.7	2,520	1,141.6

7500-148

Airflow (CFM)	Motor (HP) (1 motor)	Minimum Output (MBH)	Maximum Output (MBH)	Temp. Rise Range (°F)	Temp. Rise Range (°C)	Base Unit Weight (lbs)	Base Unit Weight (kg)
10,000	3	240	450	22 to 42	-5.6 to 5.6	3,455	1,565.1
16,000	5	240	750	14 to 43	-10.0 to 6.1	3,470	1,571.9

7500-154

Airflow (CFM)	Motor (HP) (1 motor)	Minimum Output (MBH)	Maximum Output (MBH)	Temp. Rise Range (°F)	Temp. Rise Range (°C)	Base Unit Weight (lbs)	Base Unit Weight (kg)
14,000	3	240	450	16 to 30	-8.9 to -1.1	4,080	1,848.2
22,000	5	240	750	10 to 32	-12.2 to 0.0	4,140	1,875.4
30,000	10	520	1,000	16 to 31	-8.9 to -0.6	4,210	1,907.1
30,000	10	560	1,250	17 to 39	-8.3 to 3.9	4,420	2,002.3

7500-236

Airflow (CFM)	Motor (HP) (2 motors)	Minimum Output (MBH)	Maximum Output (MBH)	Temp. Rise Range (°F)	Temp. Rise Range (°C)	Base Unit Weight (lbs)	Base Unit Weight (kg)
9,000	1	240	450	25 to 46	-3.9 to 7.8	4,145	1,877.7
18,000	3	240	750	12 to 39	-11.1 to 3.9	4,240	1,920.7
24,000	5	520	1,000	20 to 39	-6.7 to 3.9	4,270	1,934.3

7500-242

Airflow (CFM)	Motor (HP) (2 motors)	Minimum Output (MBH)	Maximum Output (MBH)	Temp. Rise Range (°F)	Temp. Rise Range (°C)	Base Unit Weight (lbs)	Base Unit Weight (kg)
21,000	3	240	750	11 to 33	-11.7 to 0.6	5,240	2,373.7
31,000	5	520	1,000	16 to 30	-8.9 to -1.1	5,270	2,387.3
31,000	5	560	1,250	17 to 37	-8.3 to 2.8	5,445	2,466.6

7500-248

Airflow (CFM)	Motor (HP) (2 motors)	Minimum Output (MBH)	Maximum Output (MBH)	Temp. Rise Range (°F)	Temp. Rise Range (°C)	Base Unit Weight (lbs)	Base Unit Weight (kg)
22,000	3	240	750	10 to 32	-12.2 to 0.0	6,190	2,804.1
35,000	5	520	1,000	14 to 26	-10.0 to -3.3	6,345	2,874.3
45,000	7.5	560	1,250	12 to 26	-11.1 to -3.3	6,575	2,978.5
45,000	7.5	560	1,500	12 to 31	-11.1 to -0.6	6,730	3,048.7

7500-254

Airflow (CFM)	Motor (HP) (2 motors)	Minimum Output (MBH)	Maximum Output (MBH)	Temp. Rise Range (°F)	Temp. Rise Range (°C)	Base Unit Weight (lbs)	Base Unit Weight (kg)
40,000	5	560	1,750	13 to 41	-10.6 to 5.0	7,870	3,565.1
60,000	10	600	2,250	9 to 35	-12.8 to 1.7	8,310	3,764.4
65,000	10	600	2,500	9 to 36	-12.8 to 2.2	8,560	3,877.7

7500-260

Airflow (CFM)	Motor (HP) (2 motors)	Minimum Output (MBH)	Maximum Output (MBH)	Temp. Rise Range (°F)	Temp. Rise Range (°C)	Base Unit Weight (lbs)	Base Unit Weight (kg)
54,000	5	600	2,916	10 to 50	-12.2 to 10.0	11,070	5,014.7
61,000	7.5	720	3,294	11 to 50	-11.7 to 10.0	11,335	5,134.8
74,000	10	720	4,000	9 to 50	-12.8 to 10.0	11,385	5,157.4

7500-272

Airflow (CFM)	Motor (HP) (2 motors)	Minimum Output (MBH)	Maximum Output (MBH)	Temp. Rise Range (°F)	Temp. Rise Range (°C)	Base Unit Weight (lbs)	Base Unit Weight (kg)
62,000	7.5	600	3,000	9 to 45	-12.8 to 7.2	12,160	5,508.5
88,000	10	720	4,500	8 to 47	-13.3 to 8.3	12,385	5,610.4
100,000	15	720	4,500	7 to 42	-13.9 to 5.6	12,515	5,669.3

Tables C: Air Turnover Cooling Unit with Filtration Performance Information

(For cooling applications, consult factory. Base Unit Weights do not account for inclusion of cooling coils or exclusion of heat exchanger.)

Additional configurations are available upon request.)

7500-136

Airflow (CFM)	Motor (HP)	Base Unit Weight (lbs)	Base Unit Weight (kg)
4,500	1 (1 motor)	2,425	1,098.5
9,000	3 (1 motor)	2,505	1,134.8
12,000	5 (1 motor)	2,520	1,141.6

7500-148

Airflow (CFM)	Motor (HP)	Base Unit Weight (lbs)	Base Unit Weight (kg)
10,000	3 (1 motor)	3,455	1,565.1
16,000	5 (1 motor)	3,470	1,571.9

7500-154

Airflow (CFM)	Motor (HP)	Base Unit Weight (lbs)	Base Unit Weight (kg)
14,000	5 (1 motor)	4,080	1,848.2
22,000	5 (1 motor)	4,140	1,875.4
30,000	10 (1 motor)	4,210	1,907.1
30,000	10 (1 motor)	4,420	2,002.3

7500-236

Airflow (CFM)	Motor (HP)	Base Unit Weight (lbs)	Base Unit Weight (kg)
9,000	2 (1 motors)	4,145	1,877.7
18,000	3 (2 motors)	4,240	1,920.7
24,000	5 (2 motors)	4,270	1,934.3

7500-242

Airflow (CFM)	Motor (HP)	Base Unit Weight (lbs)	Base Unit Weight (kg)
21,000	3 (2 motors)	5,240	2,373.7
31,000	5 (3 motors)	5,270	2,387.3
31,000	5 (3 motors)	5,445	2,466.6

7500-248

Airflow (CFM)	Motor (HP)	Base Unit Weight (lbs)	Base Unit Weight (kg)
22,000	3 (2 motors)	6,190	2,804.1
35,000	5 (2 motors)	6,345	2,874.3
45,000	7.5 (2 motors)	6,575	2,978.5
45,000	7.5 (2 motors)	6,730	3,048.7

7500-254

Airflow (CFM)	Motor (HP)	Base Unit Weight (lbs)	Base Unit Weight (kg)
40,000	5 (2 motors)	7,870	3,565.1
60,000	10 (2 motors)	8,310	3,764.4
65,000	10 (2 motors)	8,560	3,877.7

7500-260

Airflow (CFM)	Motor (HP)	Base Unit Weight (lbs)	Base Unit Weight (kg)
54,000	5 (2 motors)	11,070	5,014.7
61,000	7.5 (2 motors)	11,335	5,134.8
74,000	10 (2 motors)	11,385	5,157.4

7500-272

Airflow (CFM)	Motor (HP)	Base Unit Weight (lbs)	Base Unit Weight (kg)
62,000	7.5 (2 motors)	12,160	5,508.5
88,000	10 (2 motors)	12,385	5,610.4
100,000	15 (2 motors)	12,515	5,669.3

Tables D

Heating/Cooling Unit with Filtration Performance Information

(For cooling applications, consult factory. Base Unit Weights do not account for inclusion of cooling coils or exclusion of heat exchanger. Additional configurations are available upon request.)

7500-136

Airflow (CFM)	Motor (HP) (1 motor)	Minimum Output (MBH)	Maximum Output (MBH)	Temp. Rise Range (°F)	Temp. Rise Range (°C)	Base Unit Weight (lbs)	Base Unit Weight (kg)
4,500	1.5	240	240	49 to 49	9.4 to 9.4	2,425	1,098.5
9,000	5	240	450	25 to 46	-3.9 to -3.9	2,505	1,134.8
12,000	5	240	450	19 to 35	-7.2 to 1.7	2,520	1,141.6

7500-148

Airflow (CFM)	Motor (HP) (1 motor)	Minimum Output (MBH)	Maximum Output (MBH)	Temp. Rise Range (°F)	Temp. Rise Range (°C)	Base Unit Weight (lbs)	Base Unit Weight (kg)
10,000	5	240	450	22 to 42	-5.6 to 5.6	3,455	1,565.1
16,000	7.5	240	750	14 to 43	-10.0 to 6.1	3,470	1,571.9

7500-154

Airflow (CFM)	Motor (HP) (1 motor)	Minimum Output (MBH)	Maximum Output (MBH)	Temp. Rise Range (°F)	Temp. Rise Range (°C)	Base Unit Weight (lbs)	Base Unit Weight (kg)
14,000	5	240	450	16 to 30	-8.9 to -1.1	4,080	1,848.2
22,000	7.5	240	750	10 to 32	-12.2 to 0.0	4,140	1,875.4
30,000	10	520	1,000	16 to 31	-8.9 to -0.6	4,210	1,907.1
30,000	10	560	1,250	17 to 39	-8.3 to 3.9	4,420	2,002.3

7500-236

Airflow (CFM)	Motor (HP) (2 motors)	Minimum Output (MBH)	Maximum Output (MBH)	Temp. Rise Range (°F)	Temp. Rise Range (°C)	Base Unit Weight (lbs)	Base Unit Weight (kg)
9,000	1.5	240	450	25 to 46	-3.9 to 7.8	4,145	1,877.7
18,000	5	240	750	12 to 39	-11.1 to 3.9	4,240	1,920.7
24,000	5	520	1,000	20 to 39	-6.7 to 3.9	4,270	1,934.3

7500-242

Airflow (CFM)	Motor (HP) (2 motors)	Minimum Output (MBH)	Maximum Output (MBH)	Temp. Rise Range (°F)	Temp. Rise Range (°C)	Base Unit Weight (lbs)	Base Unit Weight (kg)
21,000	5	240	750	11 to 33	-11.7 to 0.6	5,240	2,373.7
31,000	7.5	520	1,000	16 to 30	-8.9 to -1.1	5,270	2,387.3
31,000	7.5	560	1,250	17 to 37	-8.3 to 2.8	5,445	2,466.6

7500-248

Airflow (CFM)	Motor (HP) (2 motors)	Minimum Output (MBH)	Maximum Output (MBH)	Temp. Rise Range (°F)	Temp. Rise Range (°C)	Base Unit Weight (lbs)	Base Unit Weight (kg)
22,000	5	240	750	10 to 32	-12.2 to 0.0	6,190	2,804.1
35,000	7.5	520	1,000	14 to 26	-10.0 to -3.3	6,345	2,874.3
45,000	10	560	1,250	12 to 26	-11.1 to -3.3	6,575	2,978.5
45,000	10	560	1,500	12 to 31	-11.1 to -0.6	6,730	3,048.7

7500-254

Airflow (CFM)	Motor (HP) (2 motors)	Minimum Output (MBH)	Maximum Output (MBH)	Temp. Rise Range (°F)	Temp. Rise Range (°C)	Base Unit Weight (lbs)	Base Unit Weight (kg)
40,000	5	560	1,750	13 to 41	-10.6 to 5.0	7,870	3,565.1
60,000	10	600	2,250	9 to 35	-12.8 to 1.7	8,310	3,764.4
65,000	15	600	2,500	9 to 36	-12.8 to 2.2	8,560	3,877.7

7500-260

Airflow (CFM)	Motor (HP) (2 motors)	Minimum Output (MBH)	Maximum Output (MBH)	Temp. Rise Range (°F)	Temp. Rise Range (°C)	Base Unit Weight (lbs)	Base Unit Weight (kg)
54,000	7.5	600	2,916	10 to 50	-12.2 to 10.0	11,070	5,014.7
61,000	10	720	3,294	11 to 50	-11.7 to 10.0	11,335	5,134.8
74,000	15	720	4,000	9 to 50	-12.8 to 10.0	11,385	5,157.4

7500-272

Airflow (CFM)	Motor (HP) (2 motors)	Minimum Output (MBH)	Maximum Output (MBH)	Temp. Rise Range (°F)	Temp. Rise Range (°C)	Base Unit Weight (lbs)	Base Unit Weight (kg)
62,000	7.5	600	3,000	9 to 45	-12.8 to 7.2	12,160	5,508.5
88,000	15	720	4,500	8 to 47	-13.3 to 8.3	12,385	5,610.4
100,000	15	720	4,500	7 to 42	-13.9 to 5.6	12,515	5,669.3

Installation Code and Annual Inspections:

All installation and service of RAPID™ equipment must be performed by a contractor qualified in the installation and service of equipment sold and supplied by Rapid Engineering LLC and conform to all requirements set forth in the RAPID™ manuals and all applicable governmental authorities pertaining to the installation, service and operation of the equipment. To help facilitate optimum performance and safety, Rapid Engineering LLC recommends that a qualified contractor conduct, at a minimum, annual inspections of your RAPID™ equipment and perform service where necessary, using only replacement parts sold and supplied by Rapid Engineering LLC.

Further Information: Applications, engineering and detailed guidance on systems design, installation and equipment performance is available through RAPID™ representatives. Please contact us for any further information you may require, including the Installation, Operation and Service Manual.

This product is not for residential use.

This document is intended to assist licensed professionals in the exercise of their professional judgment.

Rapid Engineering LLC

1100 Seven Mile Road NW
Comstock Park, MI 49321
Telephone: +1.616.784.0500
Toll Free: 800.536.3461
Fax: +1.616.784.1910

www.rapidengineering.com

© 2010 Rapid Engineering LLC

All rights reserved. No part of this work covered by the copyrights herein may be reproduced or copied in any form or by any means – graphic, electronic, or mechanical, including photocopying, recording, taping, or information storage and retrieval systems – without written permission of Rapid Engineering LLC.