

Direct-Fired Air-Turnover Indirect-Fired Infrared Unit Heaters Duct Furnaces Cooling



2000-Series

RapidTM
Engineering LLC

**Direct-Fired Heating, Ventilation and
Pressurization Systems**

Dimension and Selection Guide



1.800.536.3461

www.rapidengineering.com



CANADA: 100% OUTSIDE AIR ONLY

2000-Series Selection Guide

CFM (m³/h)	MODEL	MOTOR HP (kW) AT 1 in wc (2.5 mbar) EXTERNAL STATIC PRESSURE	dB "A" AT 1 in wc (2.5 mbar)** EXTERNAL STATIC PRESSURE	HEAT INPUT AT MAX. TEMP. RISE (Btu/h) x 1000		MINIMUM INLET GAS PRESSURE in wc (mbar)***	MANIFOLD SIZE in NPT (mm)
				NG	LPG		
1,000 (1,700)	2005	2 (1.5)	70	97	76	7 (17.5)	0.75 (19)
2,000 (3,400)	2005	2 (1.5)	70	194	151	7 (17.5)	0.75 (19)
3,000 (5,100)	2005	3 (2.2)	70	292	227	7 (17.5)	0.75 (19)
4,000 (6,800)	2005	3 (2.2)	70	389*	302	7 (17.5)	0.75 (19)
4,000 (6,800)	2010	3 (2.2)	69	432	346	7 (17.5)	1.0 (25)
5,000 (8,500)	2010	3 (2.2)	68	540	432	7 (17.5)	1.0 (25)
6,000 (10,200)	2010	5 (4.0)	67	648	518	7 (17.5)	1.0 (25)
7,000 (11,900)	2010	5 (4.0)	66	756*	605	7 (17.5)	1.0 (25)
8,000 (13,600)	2010	5 (4.0)	66	800*	691	7 (17.5)	1.0 (25)
9,000 (15,300)	2010	7.5 (5.5)	67	800*	778	7 (17.5)	1.0 (25)
10,000 (17,000)	2010	7.5 (5.5)	68	800*	800	7 (17.5)	1.0 (25)
7,000 (11,900)	2010B	5 (4.0)	66	756	605	7 (17.5)	1.25 (32)
8,000 (13,600)	2010B	5 (4.0)	66	864	691	7 (17.5)	1.25 (32)
9,000 (15,300)	2010B	7.5 (5.5)	67	972	778	7 (17.5)	1.25 (32)
10,000 (17,000)	2010B	7.5 (5.5)	68	1,080	864	7 (17.5)	1.25 (32)
11,000 (18,700)	2010B	10 (7.5)	68	1,188	950	7 (17.5)	1.25 (32)
12,000 (20,400)	2010B	10 (7.5)	69	1,296	1,037	7 (17.5)	1.25 (32)
13,000 (22,100)	2010B	CF	CF	1,404	1,123	7 (17.5)	1.25 (32)
14,000 (23,800)	2010B	CF	CF	1,512	1,210	7 (17.5)	1.25 (32)
12,000 (20,400)	2020	7.5 (5.5)	73	1,296	1,037	9 (22.5)	1.5 (38)
14,000 (23,800)	2020	10 (7.5)	73	1,512	1,210	9 (22.5)	1.5 (38)
16,000 (27,200)	2020	10 (7.5)	76	1,728	1,382	9 (22.5)	1.5 (38)
18,000 (30,600)	2020	15 (11.0)	77	1,944	1,555	9 (22.5)	1.5 (38)
20,000 (34,000)	2020	15 (11.0)	77	2,160	1,728	9 (22.5)	1.5 (38)
22,000 (37,400)	2020	20 (15.0)	77	2,376	1,901	9 (22.5)	1.5 (38)
25,000 (42,500)	2020	20 (15.0)	77	2,700	2,160	9 (22.5)	1.5 (38)
25,000 (42,500)	2030	15 (11.0)	74	2,700	2,160	11 (27.5)	2.0 (50)
27,500 (46,700)	2030	15 (11.0)	75	2,970	2,376	11 (27.5)	2.0 (50)
30,000 (51,000)	2030	20 (15.0)	76	3,240	2,592	11 (27.5)	2.0 (50)
32,500 (55,200)	2030	25 (18.5)	77	3,510	2,808	11 (27.5)	2.0 (50)
35,000 (59,500)	2030	25 (18.5)	79	3,780	3,024	11 (27.5)	2.0 (50)
37,500 (63,700)	2030	30 (22.5)	79	4,050*	3,240	11 (27.5)	2.0 (50)
40,000 (68,000)	2030	CF	CF	4,320*	3,456	11 (27.5)	2.0 (50)
35,000 (59,500)	2040	25 (18.5)	77	3,780	N/A	Consult Factory	1.5 - 3.0 (38 - 76)
37,500 (63,700)	2040	30 (22.5)	77	4,050			1.5 - 3.0 (38 - 76)
40,000 (68,000)	2040	30 (22.5)	77	4,320			1.5 - 3.0 (38 - 76)
42,500 (72,200)	2040	40 (30.0)	77	4,590			1.5 - 3.0 (38 - 76)
45,000 (76,500)	2040	40 (30.0)	77	4,860			1.5 - 3.0 (38 - 76)
47,500 (80,700)	2040	40 (30.0)	78	5,130			1.5 - 3.0 (38 - 76)
45,000 (76,500)	2050	30 (22.5)	77	4,860	N/A		1.5 - 3.0 (38 - 76)
47,500 (80,700)	2050	30 (22.5)	77	5,130			1.5 - 3.0 (38 - 76)
50,000 (85,000)	2050	40 (30.0)	77	5,400			1.5 - 3.0 (38 - 76)
52,500 (89,200)	2050	40 (30.0)	78	5,670			1.5 - 3.0 (38 - 76)
55,000 (93,400)	2050	40 (30.0)	78	5,940			1.5 - 3.0 (38 - 76)
57,500 (97,700)	2050	40 (30.0)	79	6,210			1.5 - 3.0 (38 - 76)
60,000 (101,900)	2050	50 (37.5)	80	6,480			1.5 - 3.0 (38 - 76)

CF = Consult Factory

* Temperature rise at this CFM is less than the maximum temperature rise.

** dB "A" is measured at 10' (3 m) from unducted discharge.

*** Maximum Inlet Gas Pressure: ANSI - Compliant Manifold (2005 - 2030) = 14 in wc (34.9 mbar)

ANSI - Compliant Manifold (2040 - 2050) = 5 psi (344.7 mbar)

FM and XL Insurance (formerly-IRI) - Compliant Manifold (All Models) = 5 psi (344.7 mbar)

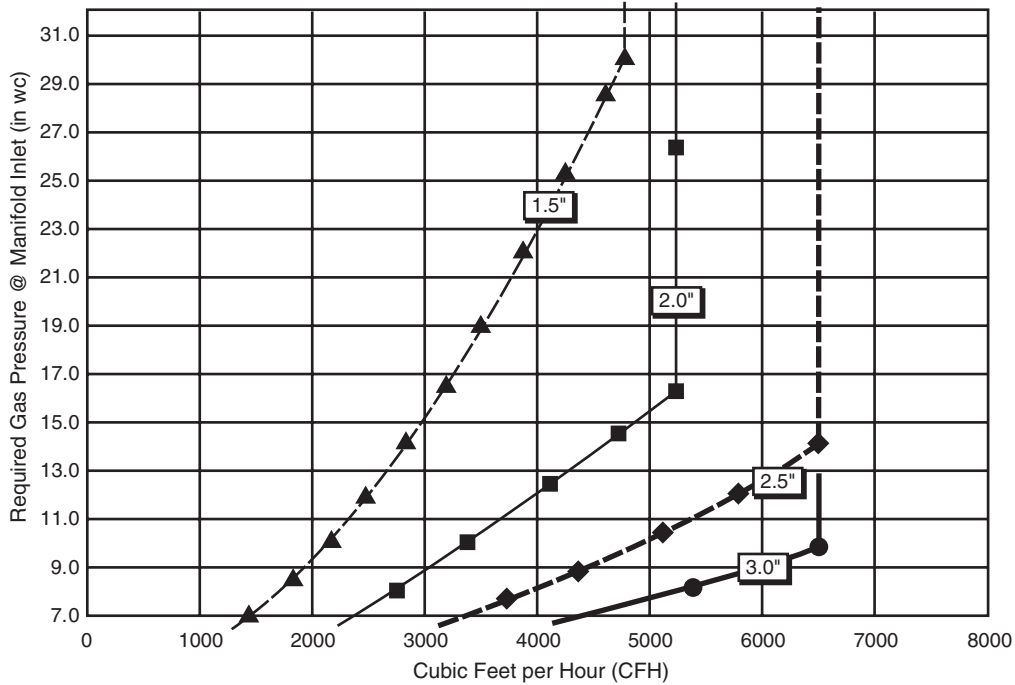
2040 & 2050 Manifold Selection Charts



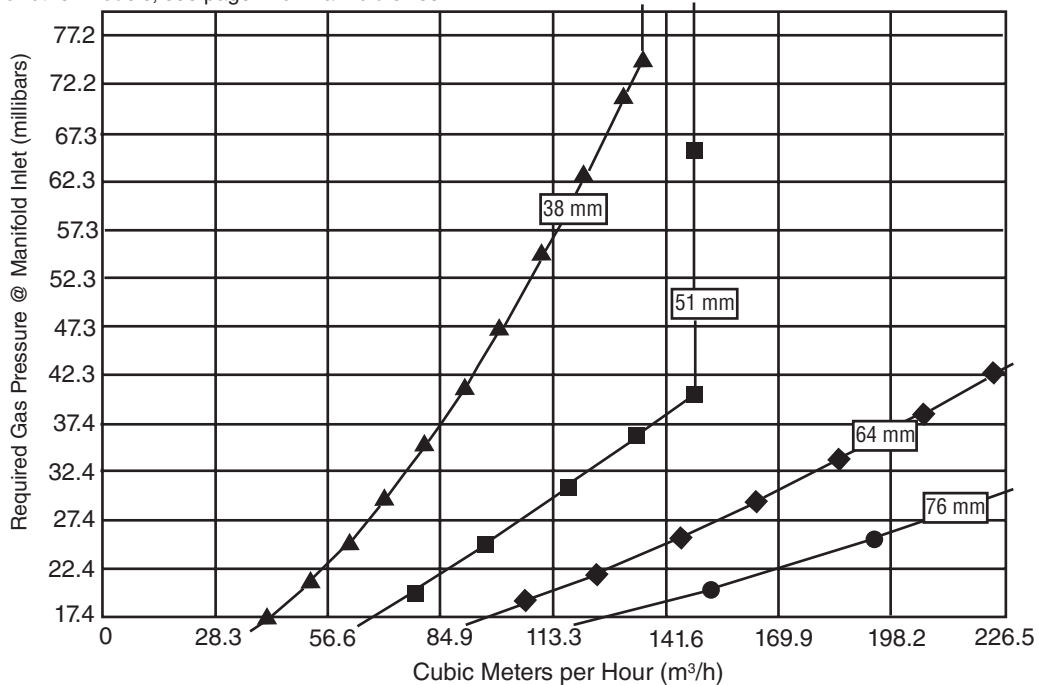
DIRECTIONS:

- To Calculate CFH:
 - For NG Unit: 1 MBH = 1,000 Btu/h = 1 CFH = 0.028 CMH (m³/h)
 - For LPG Unit: 1 MBH = 1,000 Btu/h = .65 CFH = 0.018 CMH (m³/h)
- Select a point on the chart that represents the intersection of the inlet gas pressure and the unit CFH.
- Select the manifold size to the right of this point.

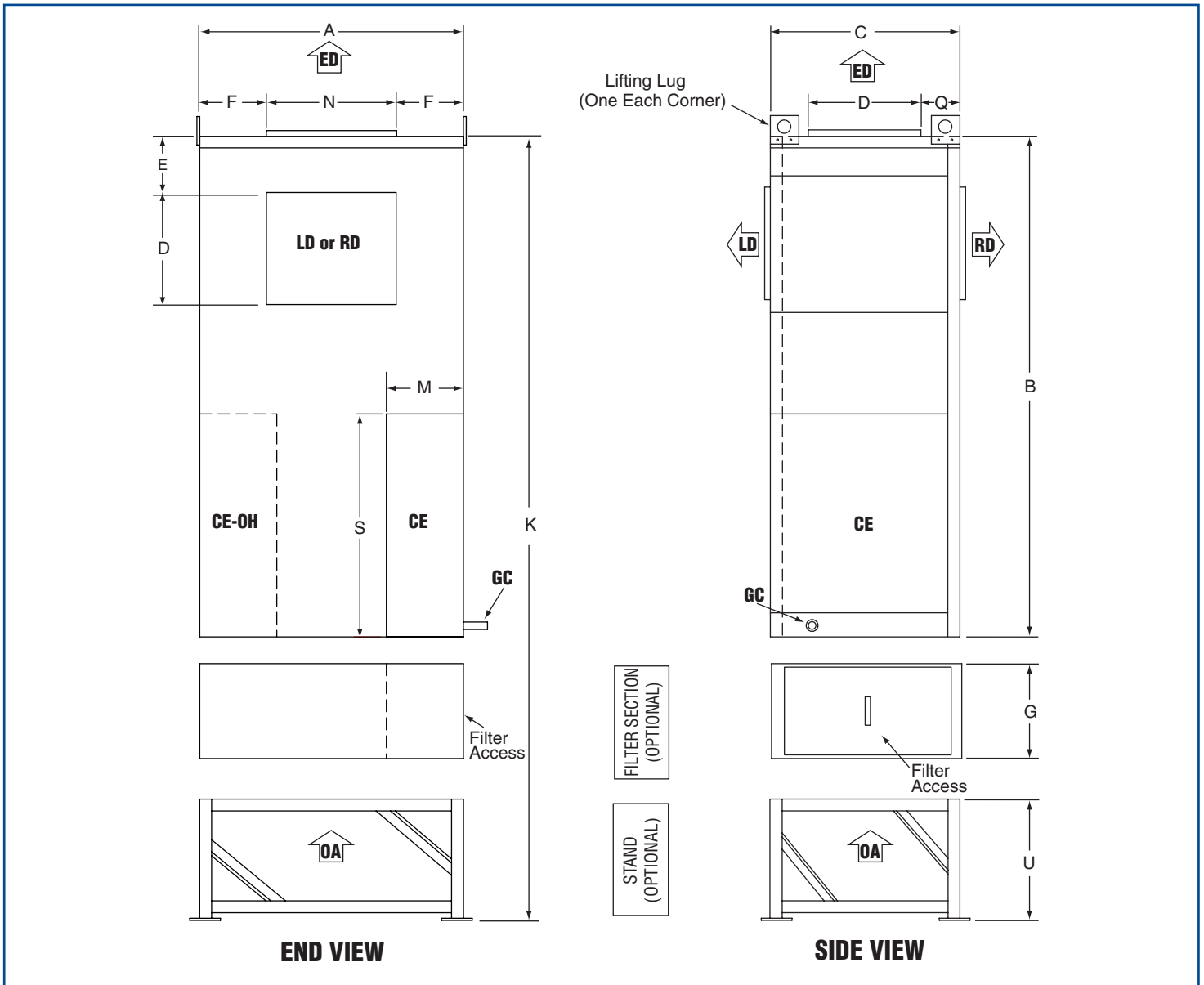
Natural Gas Flow vs. Pressure Drop using the Maxon NP burner for 2040 & 2050 (specific gravity = 0.64)
For other models, see page 2 for manifold sizes.



Natural Gas Flow vs. Pressure Drop using the Maxon NP burner for 2040 & 2050 (specific gravity = 0.64)
For other models, see page 2 for manifold sizes.



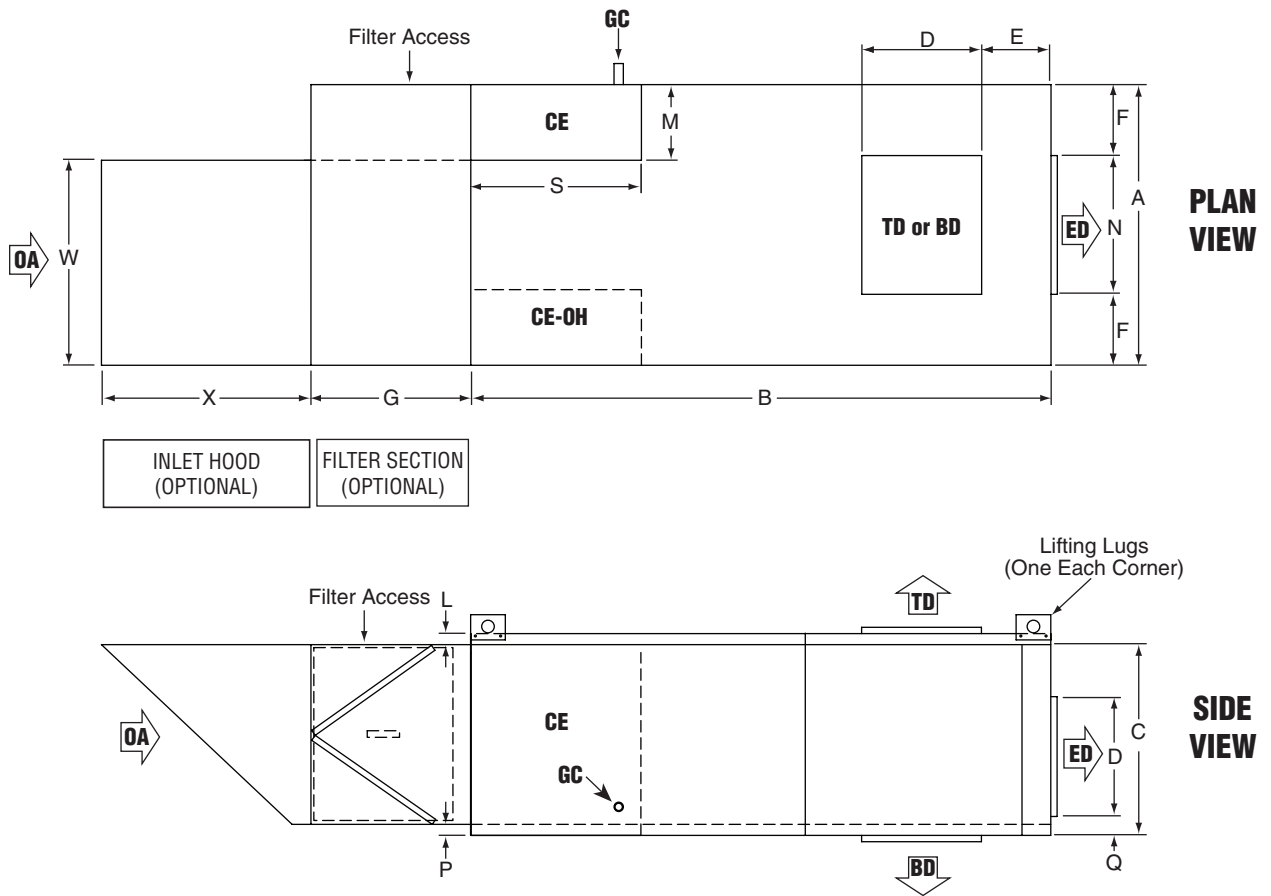
2005 Upright Model Dimensions



CABINET DIMENSIONS

MODEL		CFM	A	B	C	D	E	F	G	K	L	M	N	P	Q	S	U	W	X
2005	(in)	1,000 - 3,000	32.3	60.3	28.3	10.4	6.8	11.5	27.0	117.3	1.5	8.0	9.3	1.8	3.1	35.2	30.0	25.2	38.4
	(cm)		82.0	153.2	71.9	26.4	17.3	29.2	68.6	297.9	3.8	20.3	23.6	4.6	7.9	89.4	76.2	64.0	97.5
2005	(in)	4,000	32.3	60.3	28.3	13.8	7.6	8.2	27.0	117.3	1.5	8.0	15.8	1.8	3.1	35.2	30.0	25.2	38.4
	(cm)		82.0	153.2	71.9	35.1	19.3	20.8	68.6	297.9	3.8	20.3	40.1	4.6	7.9	89.4	76.2	64.0	97.5

2005 Horizontal Model Dimensions



ESTIMATED SHIPPING WEIGHTS

MODEL		AIR HANDLER	SKID
2005	(lb)	450.0	50.0
	(kg)	204.1	22.7

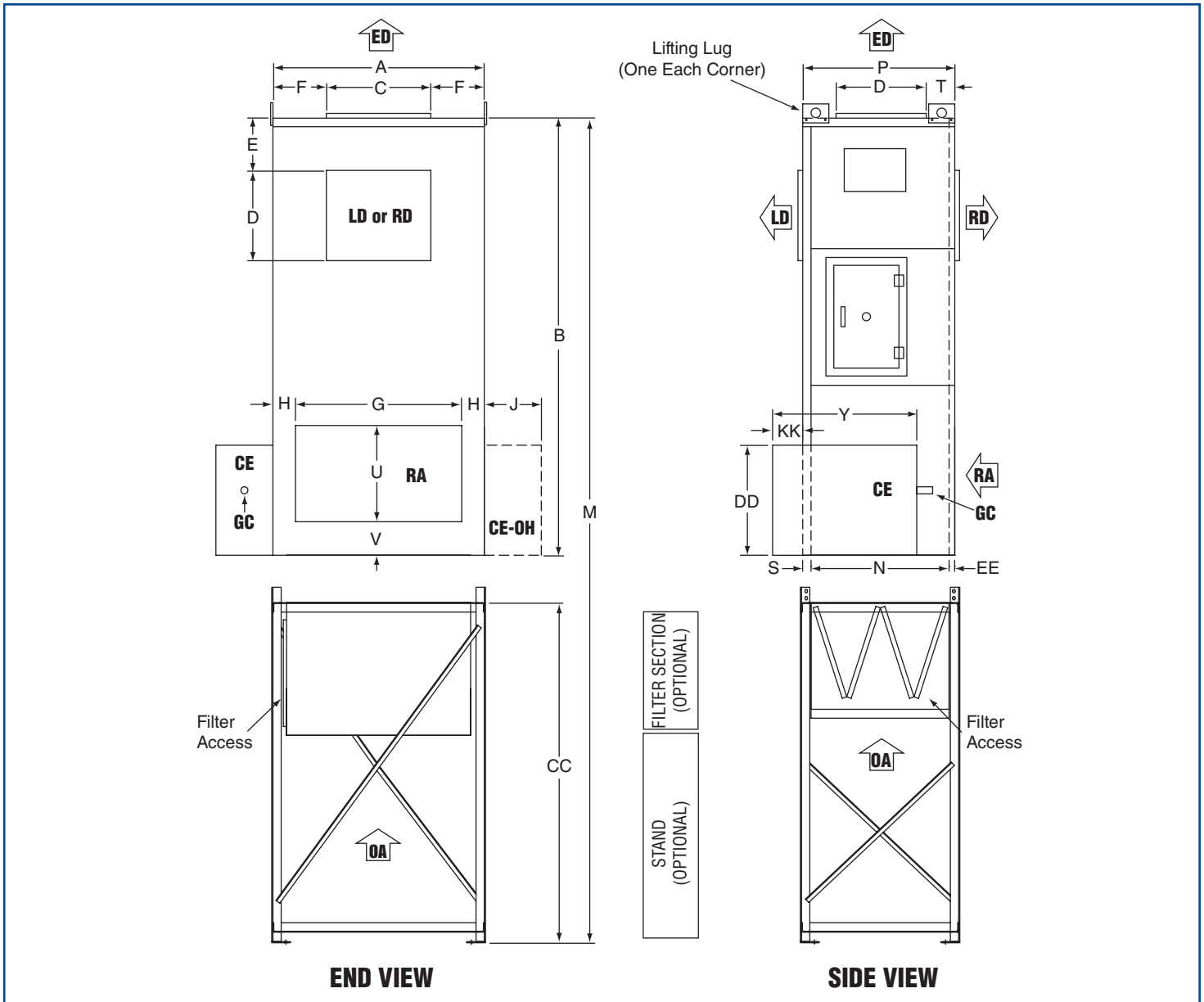
IMPORTANT NOTES:

- Shipping weights apply to both horizontal and upright models.
- All dimensions and weights are subject to change without notice.
- Outdoor air duct size varies. Consult factory.
- Control enclosure is located on the left side of the air handler when looking downstream into the inlet end.

LEGEND

BD	Bottom Discharge
CE	Control Enclosure
GC	Gas Connection
ED	End Discharge
LD	Left Discharge
OA	Outside Air
RA	Return Air (Optional)
RD	Right Discharge
TD	Top Discharge
OH	Opposite Hand

2010, 2010B, 2020 & 2030 Upright Model Dimensions



CABINET DIMENSIONS

MODEL		A	B	C	D	E	F	G	H	J	M	N	P	Q	R	S	T	U	V	W	Y	Z
2010/ 2010B	(in)	44.2	92.3	22.0	19.0	10.5	11.1	37.9	3.2	14.0	*	29.6	32.7	48.1	35.1	1.6	3.0	10.0	3.4	56.4	37.2	34.0
	(cm)	112.3	234.4	55.9	48.3	26.7	28.2	96.3	8.1	35.6	*	75.2	83.1	122.2	89.2	4.1	7.6	25.4	8.6	143.2	94.5	86.3
2020	(in)	56.0	116.2	31.5	31.5	13.8	12.3	44.3	6.0	17.0	188.2	52.6	56.1	69.6	23.3	1.5	3.9	26.5	6.0	89.3	44.0	31.0
	(cm)	142.2	295.1	80.0	80.0	35.0	31.2	112.5	15.2	43.2	477.8	133.6	142.5	176.8	59.2	3.8	9.9	67.3	15.2	226.8	111.8	78.7
2030	(in)	68.0	116.2	36.8	36.8	17.0	15.6	56.3	6.0	17.0	188.2	56.6	60.1	69.6	23.3	1.5	3.9	30.5	6.0	86.9	44.0	31.0
	(cm)	172.7	295.1	93.5	93.5	43.2	39.6	143.0	15.2	43.2	477.8	143.8	152.7	176.8	59.2	3.8	9.9	77.5	15.2	220.7	111.8	78.7

Refer to M in stand chart below.

CABINET DIMENSIONS

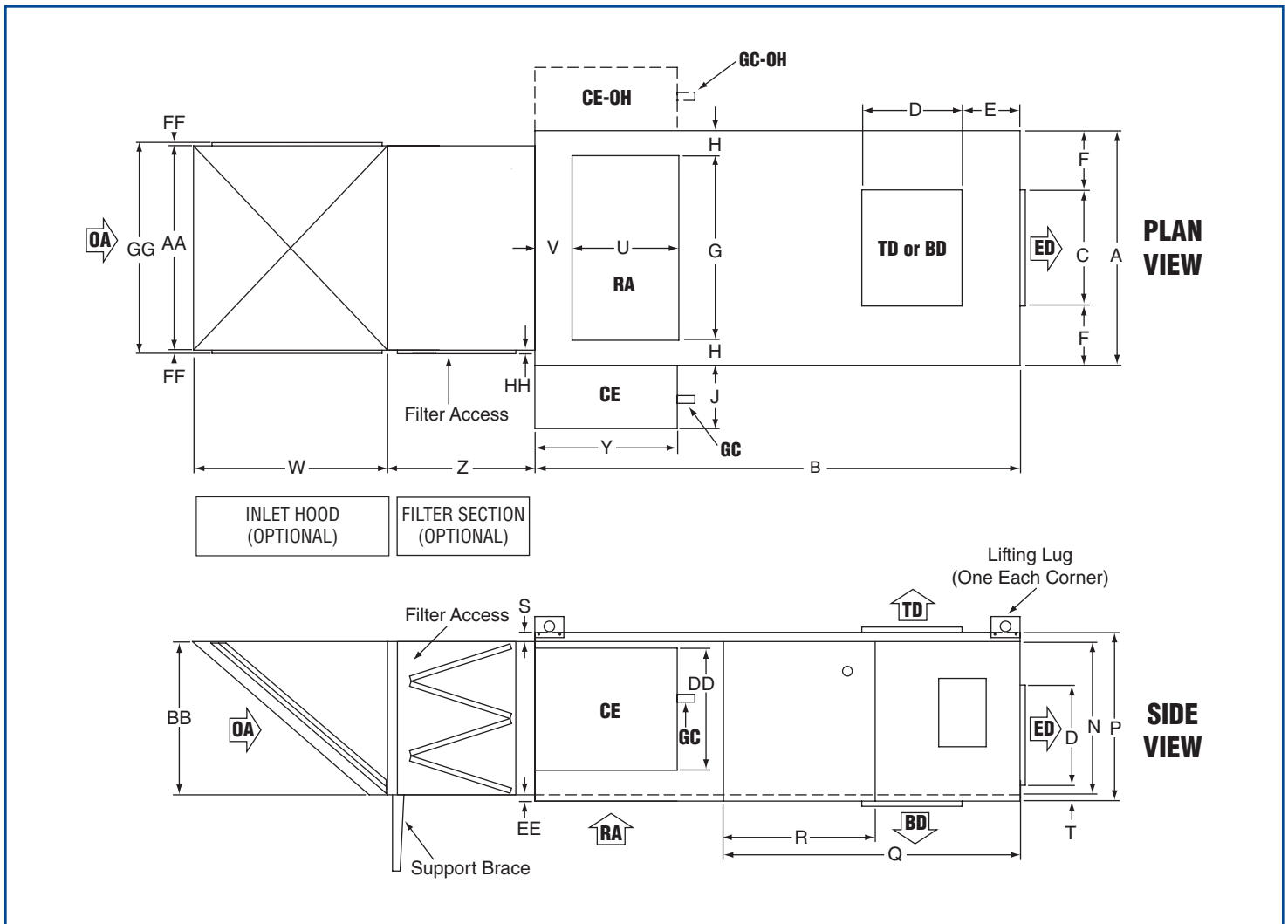
MODEL		AA	BB	CC	DD	EE	FF	GG	HH	KK
2010/ 2010B	(in)	38.8	28.8	**	28.6	1.5	1.1	41.0	0.5	6.5
	(cm)	98.6	73.2	**	72.6	3.8	2.8	104.1	1.3	16.5
2020	(in)	49.7	52.8	72.0	33.0	2.0	1.1	52.0	0.4	N/A
	(cm)	126.2	134.1	182.9	83.8	5.1	2.8	132.1	1.0	N/A
2030	(in)	64.1	56.8	72.0	33.0	2.0	1.1	66.4	0.4	N/A
	(cm)	162.8	144.3	182.9	83.8	5.1	2.8	168.7	1.0	N/A

Refer to CC in stand chart to the right.

STANDS

MODEL		M*	HEIGHT CC**
2010/ 2010B	(in)	145.3	53.0
	(cm)	369.1	134.6
2010/ 2010B	(in)	164.3	72.0
	(cm)	417.3	182.9

2010, 2010B, 2020 & 2030 Horizontal Model Dimensions



ESTIMATED SHIPPING WEIGHTS

MODEL	AIR HANDLER	SKID
2010/2010B	(lb) 700.0 (kg) 317.5	140.0 63.5
2020	(lb) 1,400.0 (kg) 638.0	340.0 154.2
2030	(lb) 1,650.0 (kg) 748.4	365.0 165.6

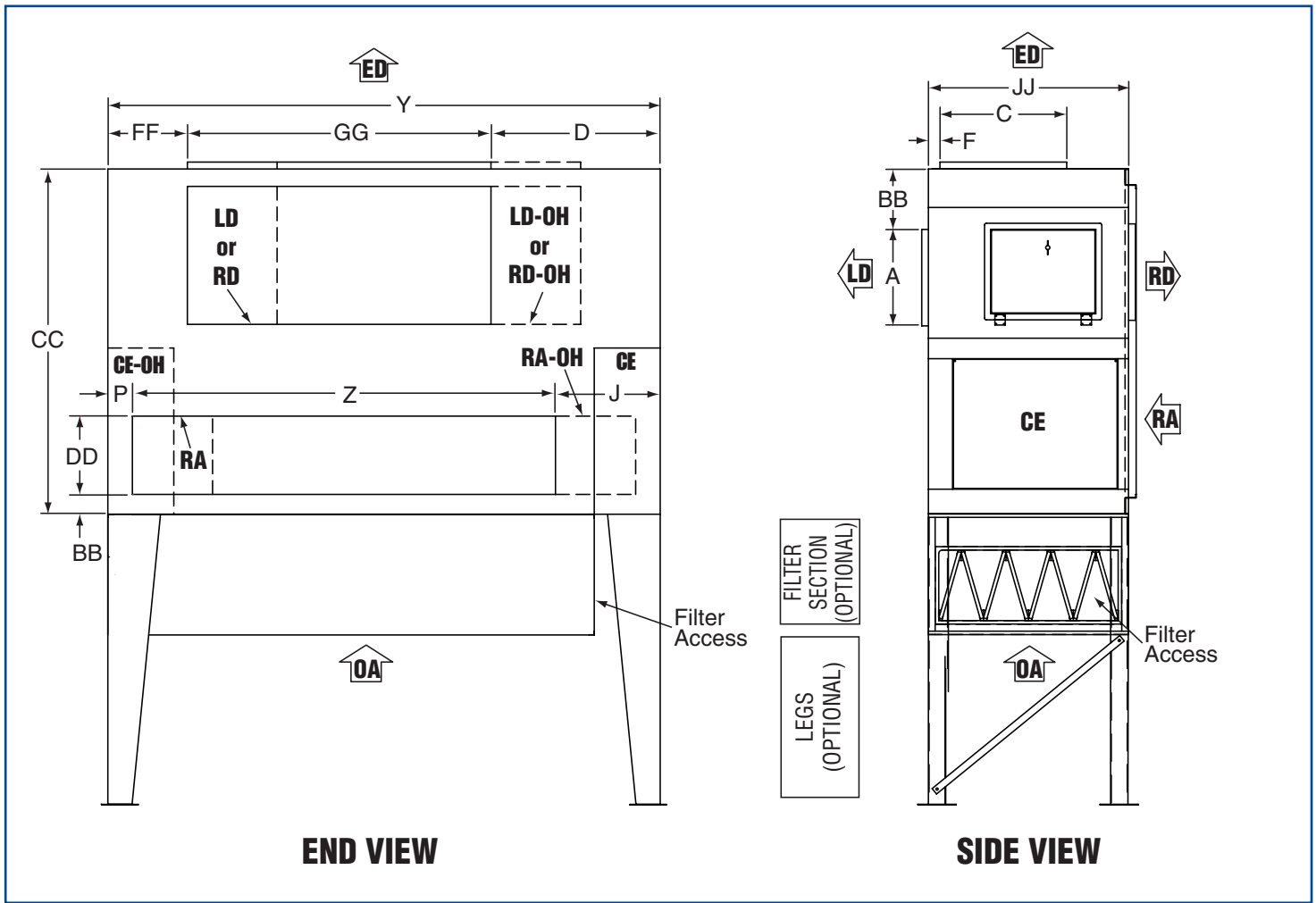
IMPORTANT NOTES:

- Shipping weights apply to both horizontal and upright models.
- All dimensions and weights are subject to change without notice.
- Outdoor air duct size varies. Consult factory.
- Support brace required on horizontal units only if both filter section and inlet hood are required. Support brace provided by factory.
- Control enclosure is located on the right side of the air handler when looking downstream into the inlet end.

LEGEND

BD = Bottom Discharge
CE = Control Enclosure
GC = Gas Connection
ED = End Discharge
LD = Left Discharge
OA = Outside Air
RA = Return Air (Optional)
RD = Right Discharge
TD = Top Discharge
OH = Opposite Hand

2040 & 2050 Upright Model Dimensions



CABINET DIMENSIONS

MODEL		A	C	F	J	M	P	V	W	X	Y	Z	BB	CC	DD	JJ
2040	(in)	40.6	31.5	12.4	31.6	60.3	5.8	86.0	138.8	34.0	160.0	122.5	5.0	100.1	28.6	58.0
	(cm)	103.1	80.0	31.5	80.3	153.0	14.7	218.4	352.6	86.4	406.4	311.2	12.7	254.3	72.6	147.3
2050	(in)	46.3	35.3	6.5	31.6	60.3	5.8	86.0	138.8	34.0	160.0	122.5	5.0	100.1	28.6	58.0
	(cm)	117.6	89.7	16.5	80.3	153.0	14.7	218.4	352.6	86.4	406.4	311.2	12.7	254.3	72.6	147.3

BOTTOM DISCHARGE

MODEL		D	FF	GG	D	FF	GG
2040	(in)	47.6	23.8	88.3	47.9	24.1	87.8
	(cm)	120.9	60.5	224.3	121.7	61.2	223.0
2050	(in)	42.0	18.2	99.1	42.4	18.7	98.6
	(cm)	106.7	46.2	251.7	107.7	47.5	250.4

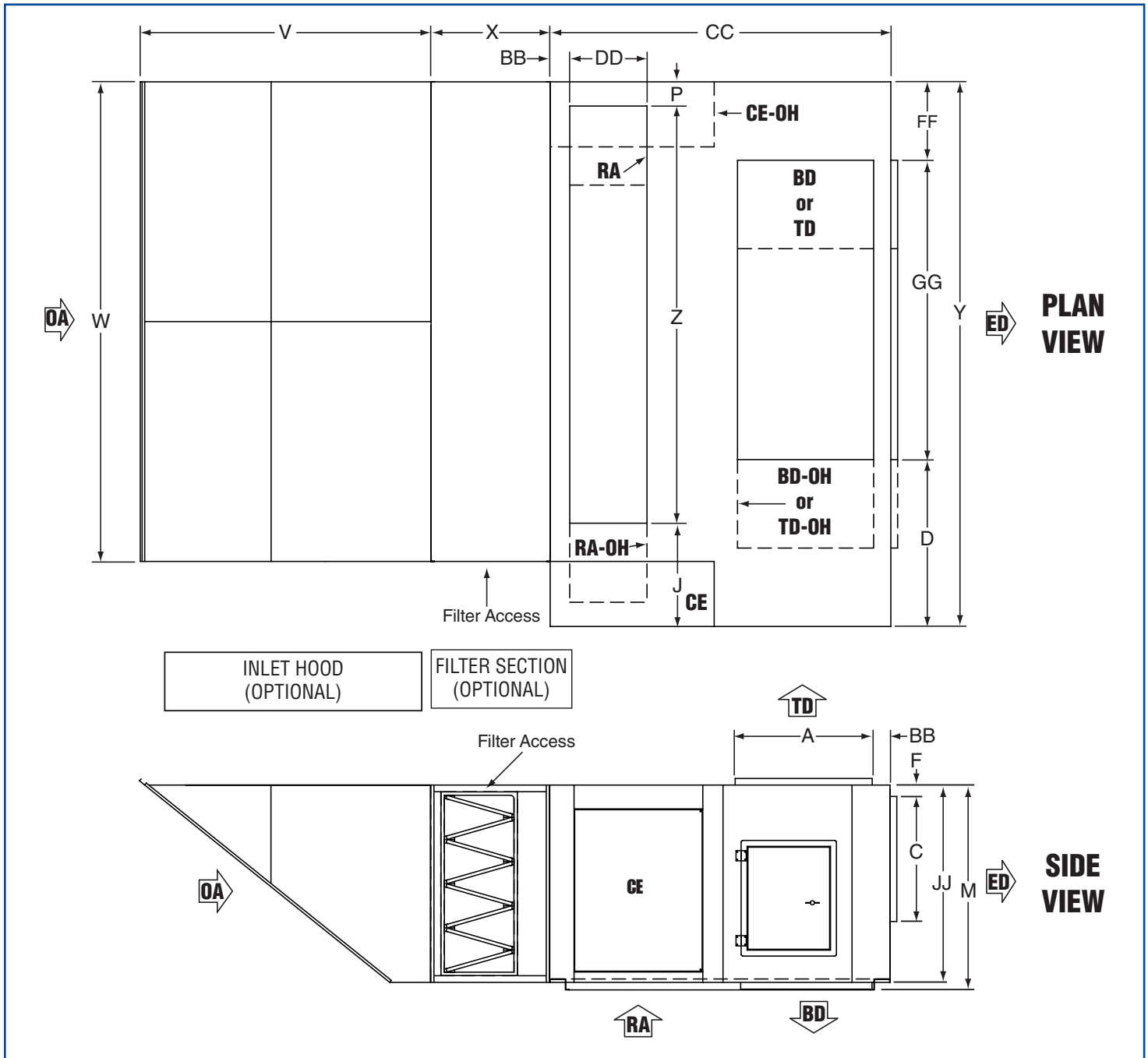
END/TOP DISCHARGE

MODEL		D	FF	GG	D	FF	GG
2040	(in)	47.6	23.8	88.3	47.9	24.1	87.8
	(cm)	120.9	60.5	224.3	121.7	61.2	223.0
2050	(in)	42.0	18.2	99.1	42.4	18.7	98.6
	(cm)	106.7	46.2	251.7	107.7	47.5	250.4

ESTIMATED SHIPPING WEIGHTS

MODEL		AIR HANDLER
2040	(lb)	3,350.0
	(kg)	1,520.0
2050	(lb)	3,800.0
	(kg)	1,723.7

2040 & 2050 Horizontal Model Dimensions



LEGEND

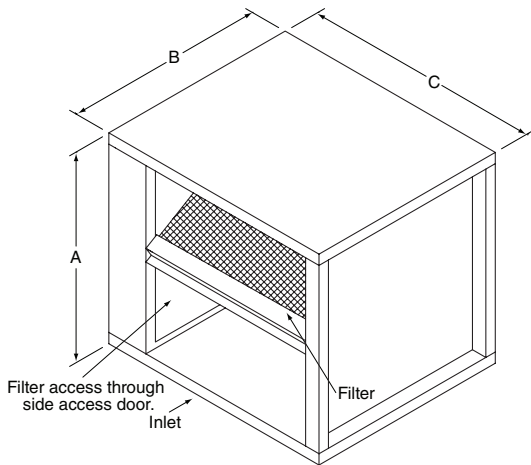
BD = Bottom Discharge
CE = Control Enclosure
GC = Gas Connection
ED = End Discharge
LD = Left Discharge
OA = Outside Air
RA = Return Air (Optional)
RD = Right Discharge
TD = Top Discharge
OH = Opposite Hand

IMPORTANT NOTES:

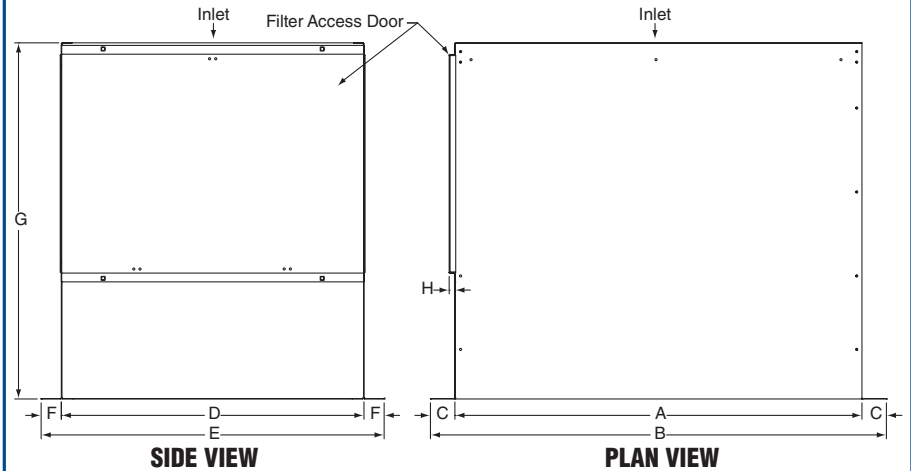
- Shipping weights apply to both horizontal and upright models.
- All dimensions and weights are subject to change without notice.
- Outdoor air duct size varies. Consult factory.
- Support brace required on horizontal units only if both filter section and inlet hood are required. Support brace provided by factory.
- Control enclosure is located on the right side of the air handler when looking downstream into the inlet end.

Filter Sections

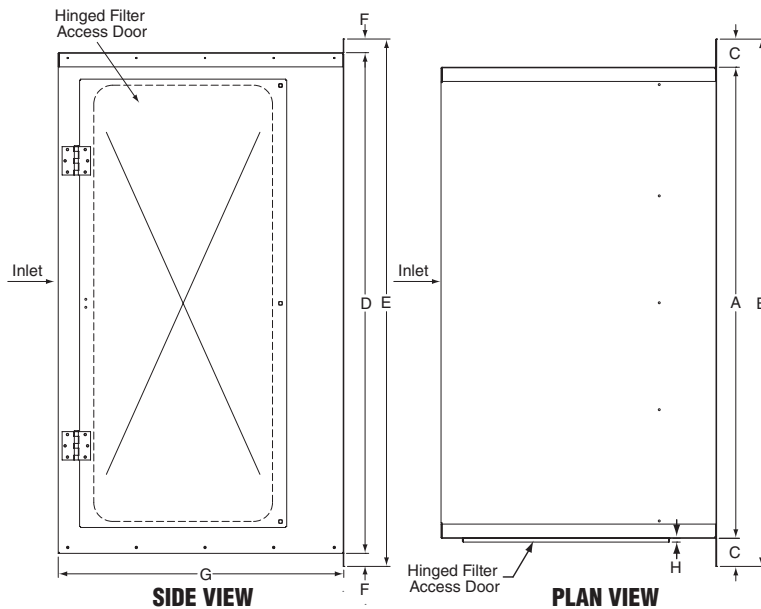
2005 FILTER SECTION



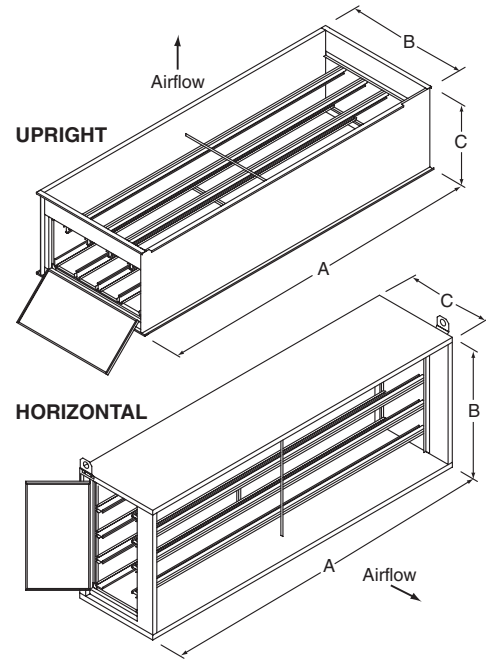
2010/2010B FILTER SECTION



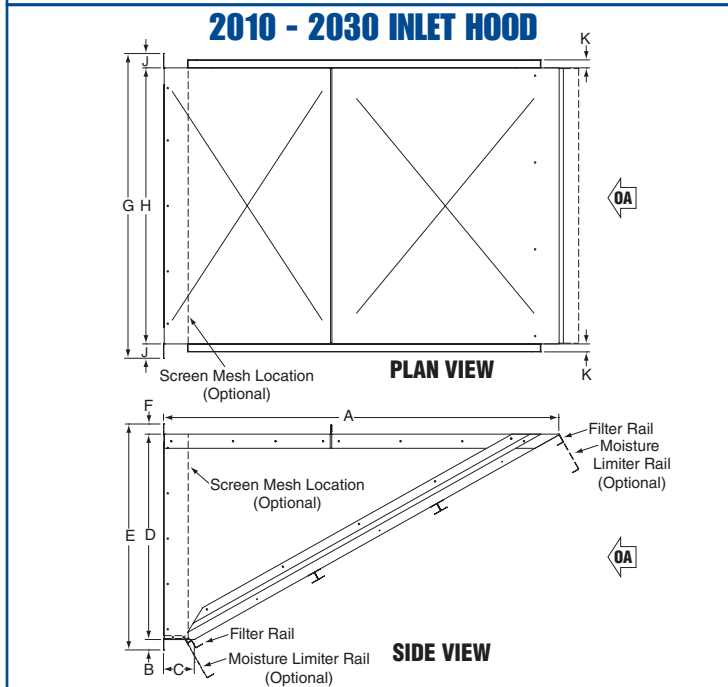
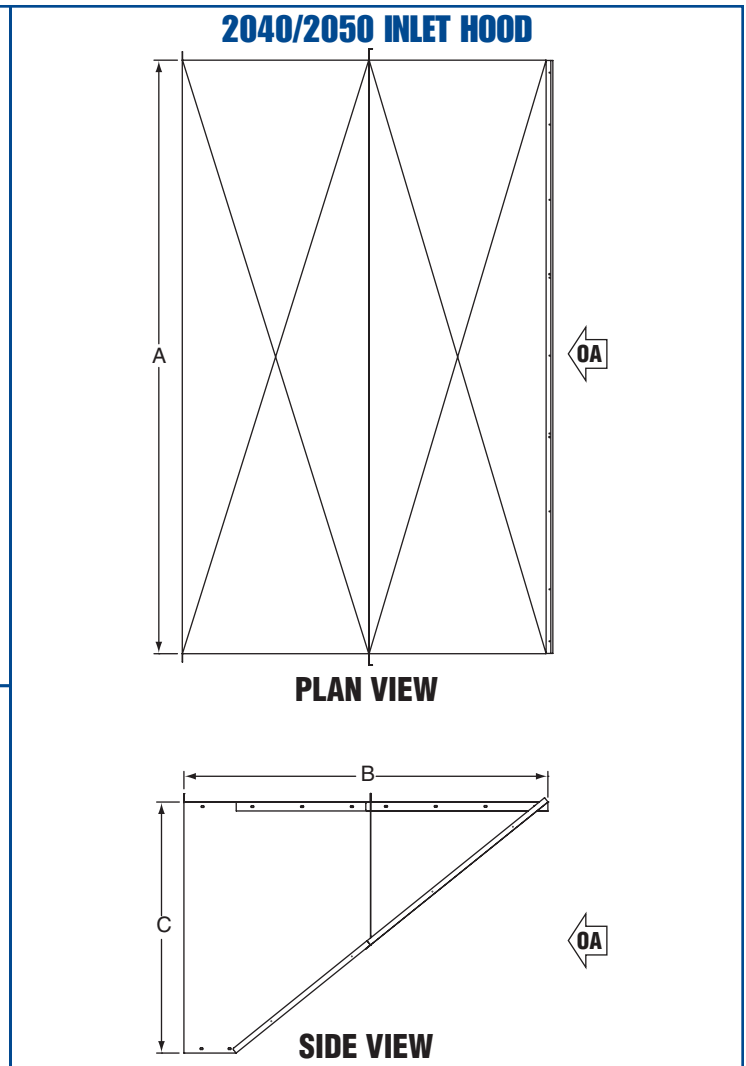
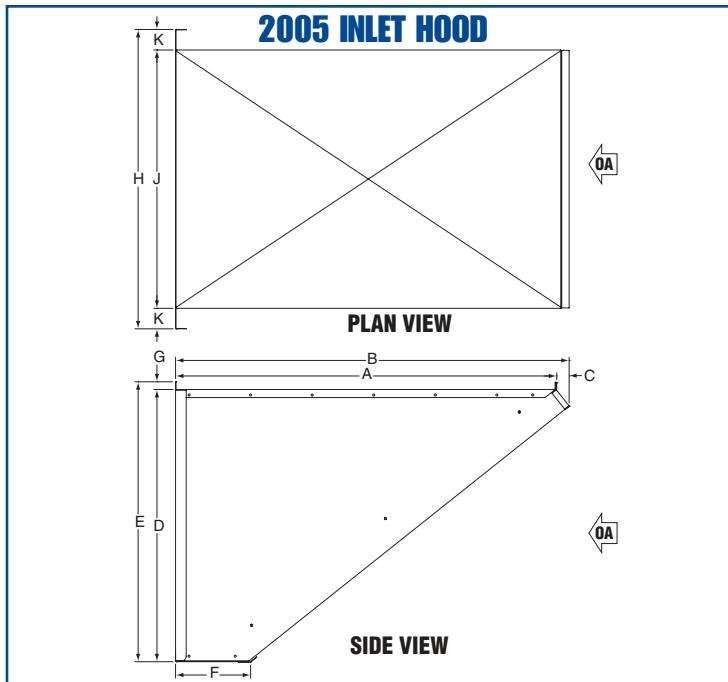
2020/2030 FILTER SECTION



2040/2050 FILTER SECTION



MODEL	FILTER SECTION DIMENSIONS									FILTERS				WEIGHT	
										PERMANENT ALUMINUM MESH		DISPOSABLE POLYESTER			
	A	B	C	D	E	F	G	H	SIZE	QTY	SIZE	QTY	lbs	kg	
2005	(in) 28.3 (cm) 71.9	27.0 68.6	32.3 82.1	N/A	N/A	N/A	N/A	N/A	20 x 25 x 2 50.8 x 63.5 x 5.1	2	20 x 50 x 1 50.8 x 127 x 2.5	1	100.0	45.4	
2010/2010B	(in) 38.8 (cm) 98.6	43.4 110.2	2.3 5.9	28.8 73.2	32.7 83.1	1.9 4.9	34.0 86.3	0.5 1.3	20 x 20 x 1 50.8 x 50.8 x 2.5	8	20 x 40 x 1 50.8 x 101.6 x 2.5	4	100.0	45.4	
2020	(in) 49.7 (cm) 126.2	55.7 141.5	3.0 7.6	52.8 134.1	55.7 141.5	1.4 3.6	31.0 78.7	0.4 1.0	20 x 25 x 1 50.8 x 63.5 x 2.5	12	20 x 50 x 1 50.8 x 127 x 2.5	6	220.0	99.8	
2030	(in) 64.1 (cm) 162.8	68.3 173.5	2.1 5.3	56.8 144.3	60.7 154.2	1.9 4.8	31.0 78.7	0.4 1.0	20 x 20 x 1 & 20 x 25 x 1 50.8 x 50.8 x 2.5 & 50.8 x 63.5 x 2.5	16 & 8 16 & 8	20 x 60 x 1 50.8 x 152.4 x 2.5	8	270.0	122.5	
2040/2050 UP-RIGHT	(in) 143.0 (cm) 363.2	53.6 136.1	34.9 88.6	N/A	N/A	N/A	N/A	N/A	20 x 20 x 1 50.8 x 50.8 x 2.5	56	20 x 140 x 1 50.8 x 355.6 x 2.5	8	550.0	249.5	
2040/2050 HORIZONTAL	(in) 138.8 (cm) 352.6	57.9 147.1	34.0 86.4	N/A	N/A	N/A	N/A	N/A	20 x 20 x 1 50.8 x 50.8 x 2.5	56	20 x 140 x 1 50.8 x 355.6 x 2.5	8	580.0	263.1	



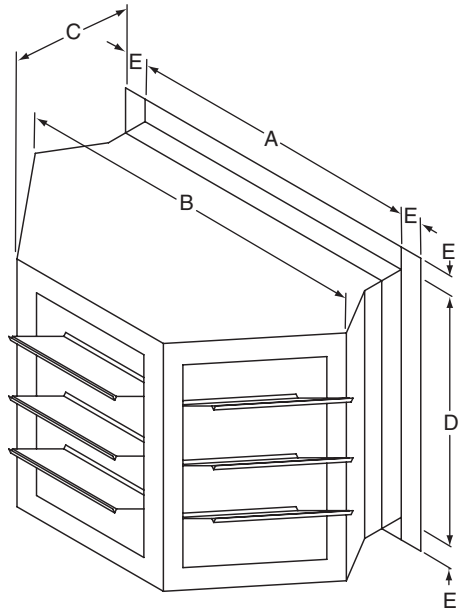
IMPORTANT NOTES:

- Inlet hood is also available with screen mesh, no filters.
- Inlet variation of screen mesh without filters has equal weight as inlet hoods with filters, with the exception of 2040 and 2050 (less 120 lbs/54 kg to filtered variation).

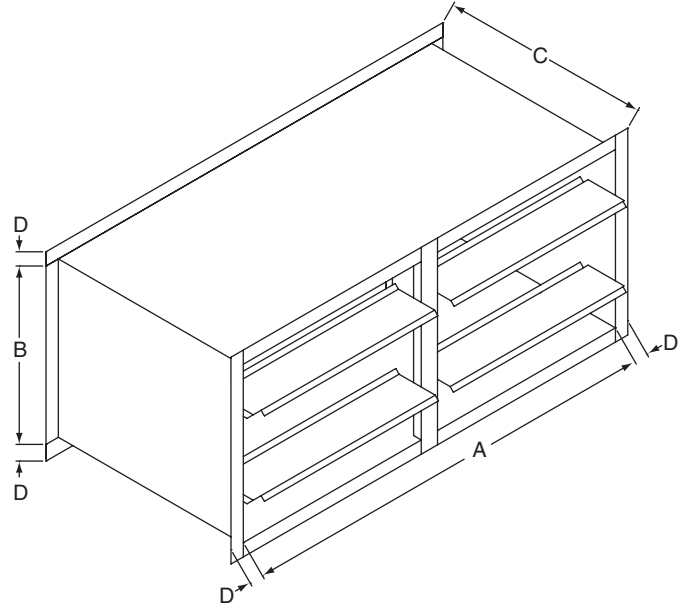
MODEL	INLET HOOD DIMENSIONS											INLET VARIATIONS (SEE NOTES)							
												PERMANENT ALUMINUM MESH FILTERS				MOISTURE LIMITER			
												SIZE	QTY	WEIGHT		SIZE	QTY	WEIGHT	
		lbs	kg			lbs	kg												
2005	(in)	37.2	38.4	1.2	26.4	27.3	7.3	0.9	29.2	25.0	2.1	20 x 25 x 2	2	60.0	27.2	N/A	N/A	N/A	N/A
	(cm)	94.5	97.5	3.0	67.1	69.3	18.5	2.3	74.2	63.5	5.3								
2010/ 2010B	(in)	56.4	1.5	4.3	29.0	31.9	1.4	43.0	38.9	2.0	1.1	20 x 20 x 1	6	110.0	49.9	12 x 60 x 5.5	3	120.0	54.4
	(cm)	143.2	3.8	10.9	73.7	81.0	3.6	109.0	98.8	5.1	2.8								
2020	(in)	89.3	1.3	5.0	52.8	55.3	1.3	52.1	49.7	1.2	1.1	20 x 25 x 1	10	190.0	86.2	12 x 96 x 5.5	4	210.0	95.3
	(cm)	226.8	3.3	12.7	134.1	140.5	3.3	132.3	126.2	3.0	2.8								
2030	(in)	86.9	1.3	4.7	56.8	59.3	1.3	66.8	64.1	1.3	1.1	20 x 20 x 1 & 20 x 25 x 1	10 & 5	240.0	108.9	12 x 96 x 5.5	5	260.0	117.9
	(cm)	220.7	3.3	11.9	144.3	150.6	3.3	169.7	162.8	3.3	2.8								
2040/ 2050	(in)	137.5	86.0	58.0	N/A	N/A	N/A	N/A	N/A	N/A	N/A	24 x 24 x 2	24	600.0	272.2	12 x 96 x 5.5	12	710.0	322.0
	(cm)	349.3	218.4	147.3	N/A	N/A	N/A	N/A	N/A	N/A	N/A								

Discharge Heads

2005 - 2030 THREE-WAY DISCHARGE HEAD



2040/2050 ONE-WAY DISCHARGE HEAD



THREE-WAY DISCHARGE HEAD DIMENSIONS

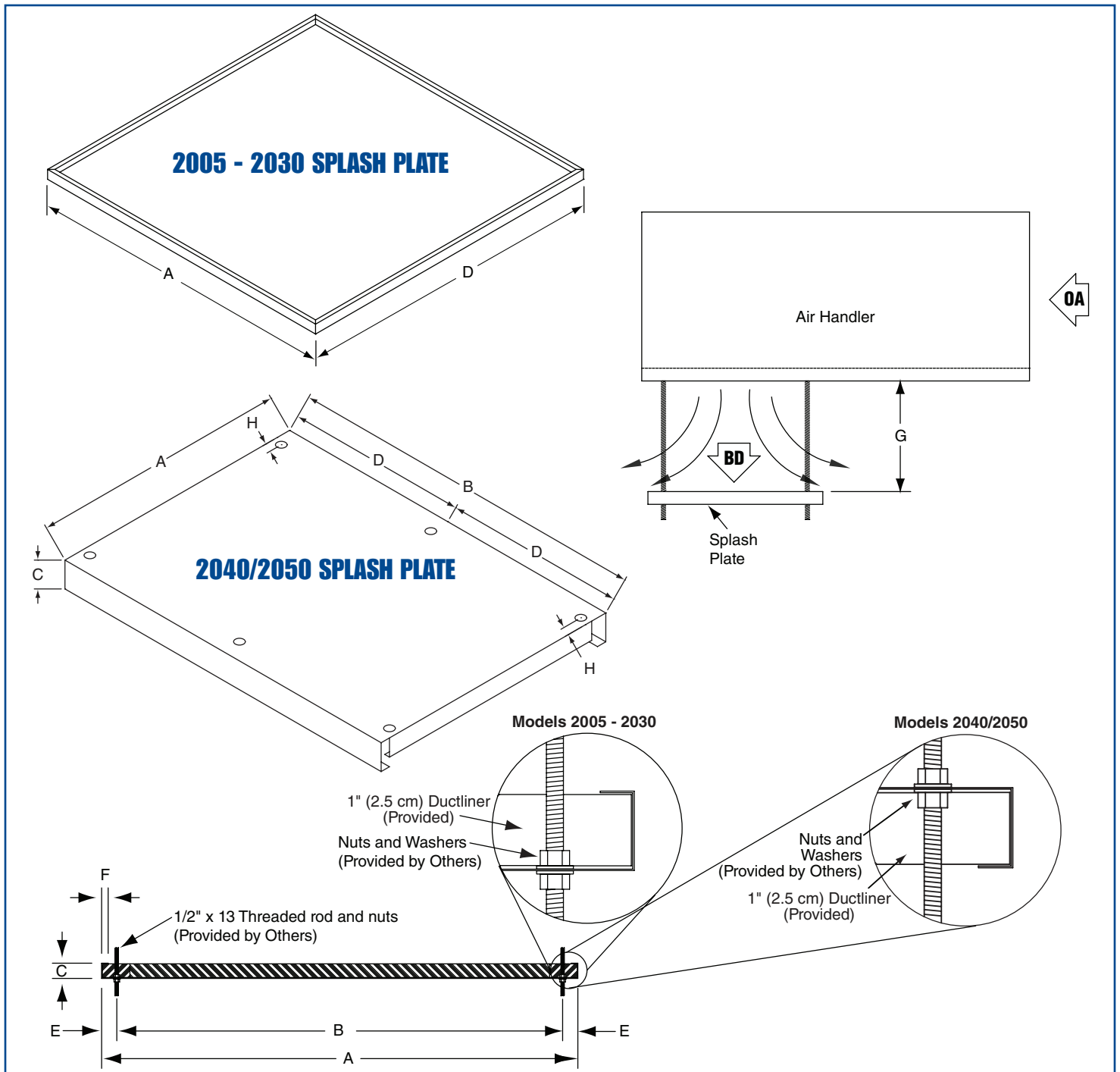
MODEL		A	B	C	D	E	WEIGHT	
							lbs	kg
2005	(in)	19.0	40.8	23.8	21.0	2.0	50.0	22.7
	(cm)	48.3	103.5	60.3	53.3	5.1		
2010/2010B	(in)	22.4	40.8	24.0	19.4	2.0	80.0	36.3
	(cm)	56.9	103.5	61.0	49.3	5.1		
2020	(in)	31.9	43.3	21.5	33.9	2.0	120.0	54.4
	(cm)	81.0	109.9	54.6	86.1	5.1		
2030	(in)	36.9	48.3	22.5	36.9	2.0	160.0	72.6
	(cm)	93.7	122.6	57.2	93.7	5.1		

ONE-WAY DISCHARGE HEAD DIMENSIONS

MODEL		A	B	C	D	WEIGHT	
						lbs	kg
2040	(in)	87.8	39.8	30.0	3.0	215.0	97.5
	(cm)	222.9	101.1	76.2	7.6		
2050	(in)	103.8	48.5	30.0	2.0	355.0	161.0
	(cm)	263.5	123.2	76.2	5.1		

IMPORTANT NOTES:

- Discharge head must be field supported by others.
- Discharge head has manually adjustable horizontal blades.



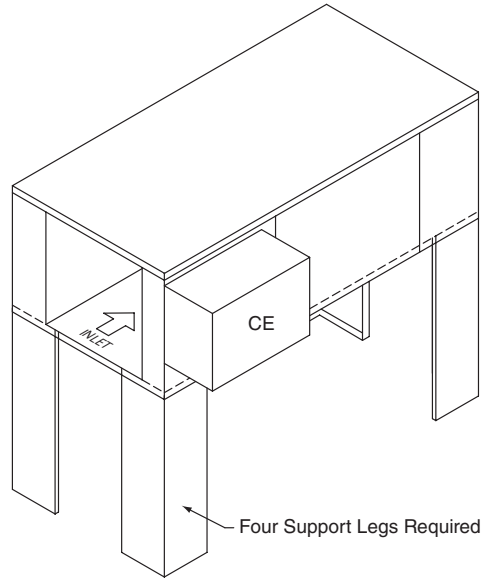
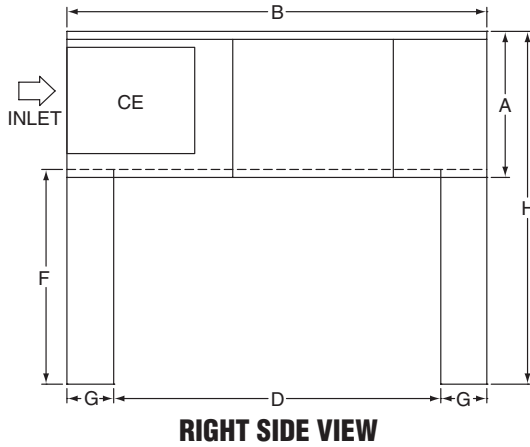
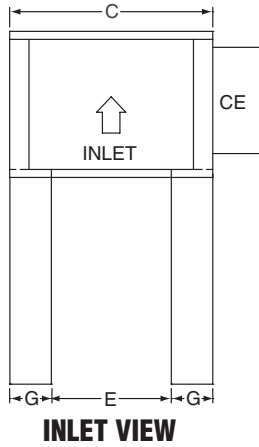
SPLASH PLATE DIMENSIONS

MODEL		A	B	C	D	E	F	G (min)	G (max)	H	WEIGHT	
											lbs	kg
2005	(in)	22.0	19.5	0.9	25.0	1.3	0.6	15.0	20.0	N/A	20.0	9.1
	(cm)	55.9	49.5	2.2	63.5	3.2	1.6	38.1	50.8	N/A	20.0	9.1
2010/2010B	(in)	44.0	41.5	0.9	44.0	1.3	0.6	18.0	27.0	N/A	40.0	18.1
	(cm)	111.8	105.4	2.2	111.8	3.2	1.6	47.5	68.6	N/A	40.0	18.1
2020	(in)	54.8	51.3	1.8	54.8	1.8	0.8	25.0	38.0	N/A	60.0	27.2
	(cm)	139.1	130.2	4.4	139.1	4.4	2.0	63.5	96.5	N/A	60.0	27.2
2030	(in)	54.8	51.3	1.8	54.8	1.8	0.8	30.0	45.0	N/A	60.0	27.2
	(cm)	139.1	130.2	4.4	139.1	4.4	2.0	76.2	114.3	N/A	60.0	27.2
2040/2050	(in)	51.0	110.4	3.0	55.2	2.0	1.0	25.0	38.0	1.8	170.0	77.1
	(cm)	129.5	280.4	7.6	140.2	5.1	2.5	63.5	96.5	4.6	170.0	77.1

IMPORTANT NOTES:

- 2005 - 2030 require four threaded rods.
- 2040 and 2050 require six threaded rods.

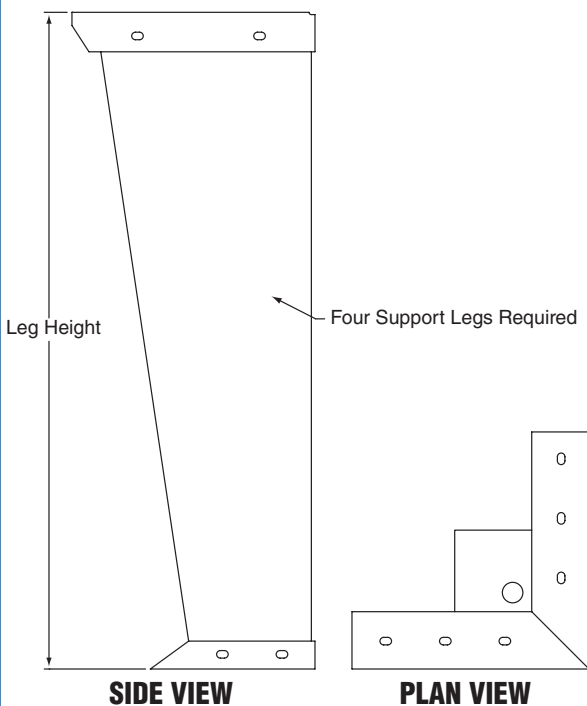
2005 - 2030 LEGS



LEG DIMENSIONS

MODEL		A	B	C	D	E	F	G	H	WEIGHT (EACH LEG)	
										lbs	kg
2005 (See Note)	(in)	28.3	60.3	32.3	31.1	3.1	46.0	14.6	72.5	26.0	11.8
	(cm)	71.9	153.2	82.0	79.0	7.9	116.8	37.1	184.2		
2010/2010B	(in)	32.7	92.3	44.2	63.1	15.0	46.0	14.6	77.2	26.0	11.8
	(cm)	83.1	234.4	112.3	160.3	38.1	116.8	37.1	196.1		
2020	(in)	56.1	116.1	56.0	86.9	26.8	46.0	14.6	100.1	26.0	11.8
	(cm)	142.5	294.9	142.2	220.7	68.1	116.8	37.1	254.3		
2030	(in)	60.1	116.1	68.0	96.9	38.8	46.0	14.6	104.1	26.0	11.8
	(cm)	152.7	294.9	172.7	220.7	98.6	116.8	37.1	264.4		

2040/2050 LEGS



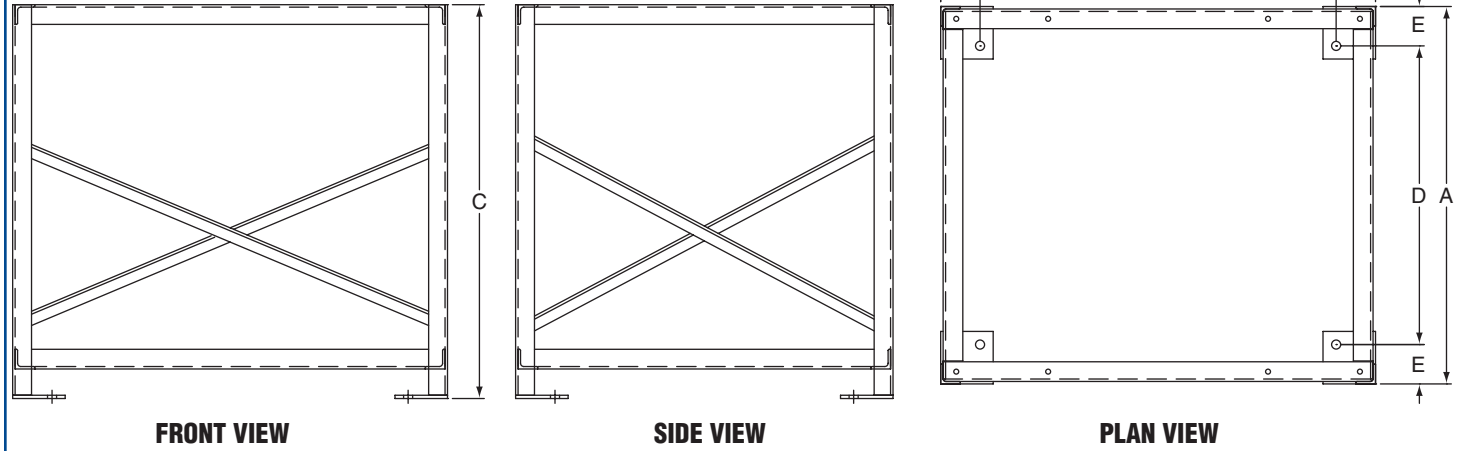
2040/2050 LEG DIMENSIONS

LEG HEIGHT		WEIGHT (EACH LEG)	
		lbs	kg
(in)	24.0	26.3	11.9
(cm)	61.0		
(in)	36.0	35.0	15.9
(cm)	91.4		
(in)	48.0	43.8	19.9
(cm)	121.9		
(in)	60.0	53.8	24.4
(cm)	152.4		
(in)	72.0	62.5	28.4
(cm)	182.9		
(in)	84.0	71.3	32.4
(cm)	213.4		
(in)	96.0	81.3	36.9
(cm)	243.8		

IMPORTANT NOTES:

- 2005 control enclosure is located on the left side of the air handler when looking downstream of the inlet end.
- 24" (61 cm) and 36" (91.4 cm) leg heights are not available for upright units.
- 48" (121.9 cm) minimum leg height without filter section for 2040.
- 60" (152.4 cm) minimum leg height without filter section for 2050.
- 72" (182.9 cm) minimum leg height with a filter section for 2040.
- 96" (243.8 cm) minimum leg height with a filter section for 2050.

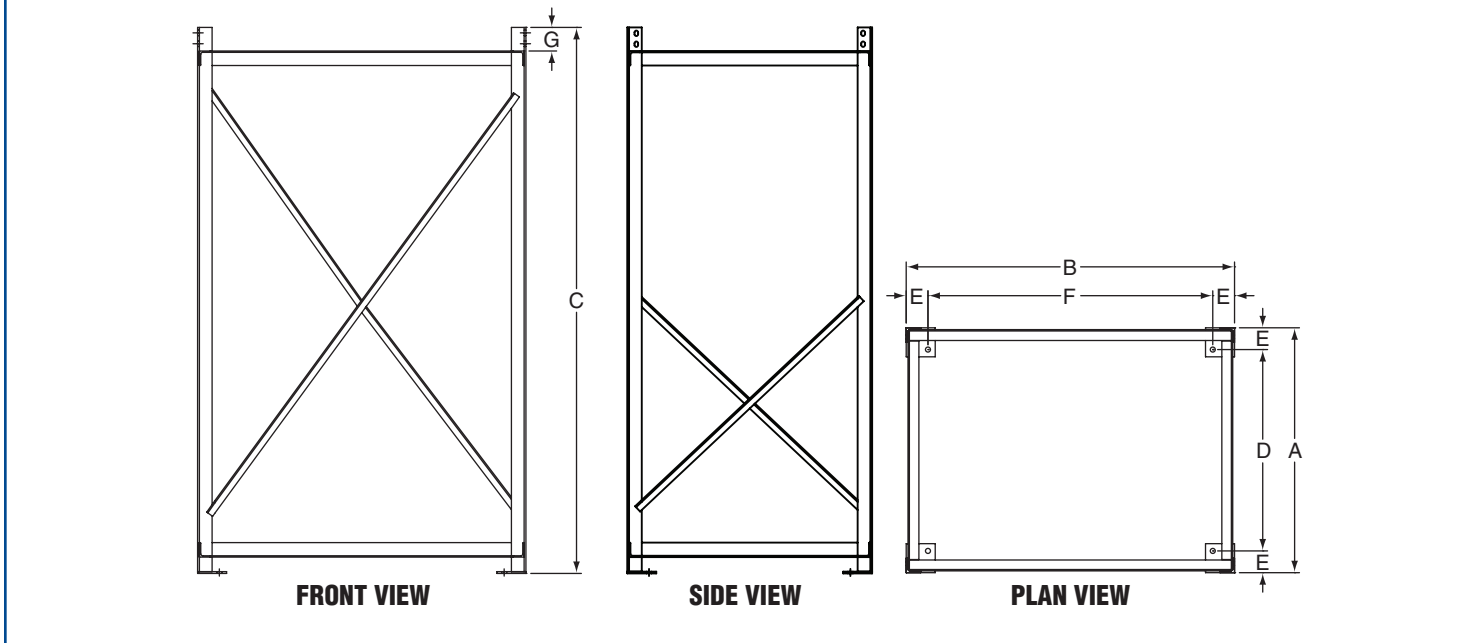
2005 30" UPRIGHT STAND



30" UPRIGHT STAND DIMENSIONS

								WEIGHT	
MODEL		A	B	C	D	E	F	lbs	kg
2005	(in)	28.8	33.1	30.0	22.8	3.0	27.1	75.0	34.0
	(cm)	73.0	84.1	76.2	57.8	7.6	68.9		

2010 - 2030 53"/72" UPRIGHT STAND



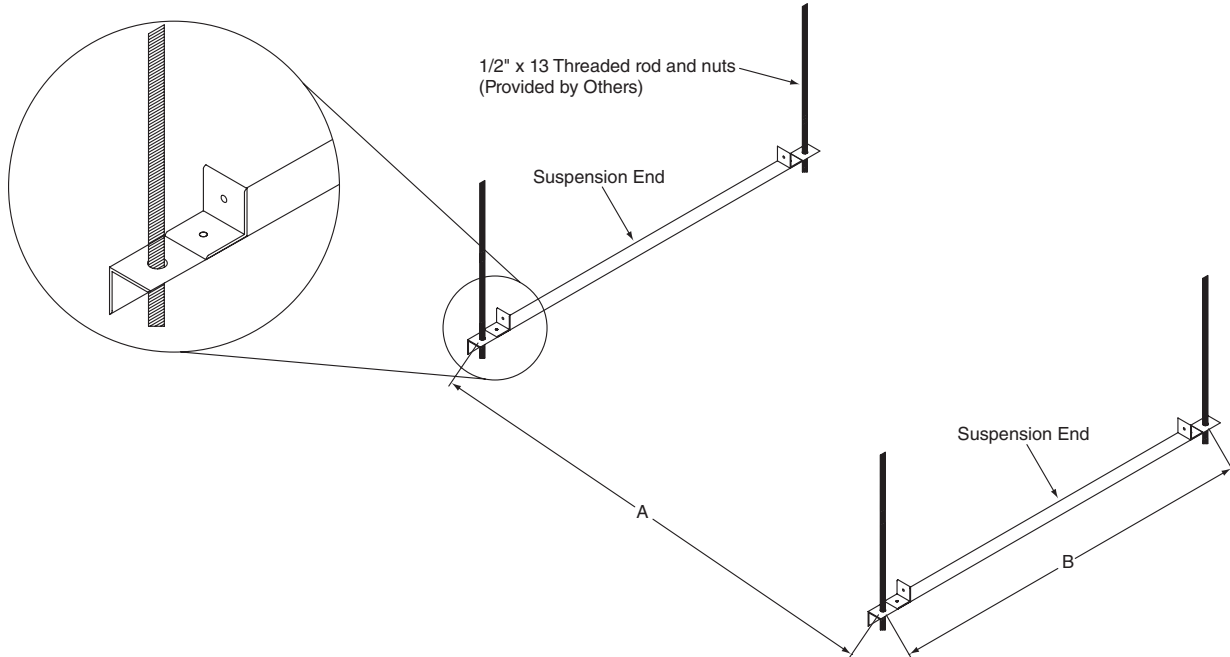
53"/72" UPRIGHT STAND DIMENSIONS

								WEIGHT		
MODEL		A	B	C	D	E	F	G	lbs	kg
2010/2010B (53")	(in)	33.8	45.3	56.3	27.8	3.0	39.3	3.3	160.0	72.6
	(cm)	85.7	114.9	142.9	70.5	7.6	99.7	8.3		
2010/2010B (72")	(in)	33.8	45.3	75.3	27.8	3.0	32.5	3.3	190.0	86.2
	(cm)	85.7	114.9	191.1	70.5	7.6	82.6	8.3		
2020	(in)	57.5	57.5	75.3	51.1	3.0	51.5	3.3	230.0	104.3
	(cm)	146.1	146.1	191.1	129.8	7.6	130.8	8.3		
2030	(in)	69.5	61.8	75.3	63.5	3.0	55.8	3.3	300.0	136.1
	(cm)	176.5	156.8	191.1	161.3	7.6	141.6	8.3		

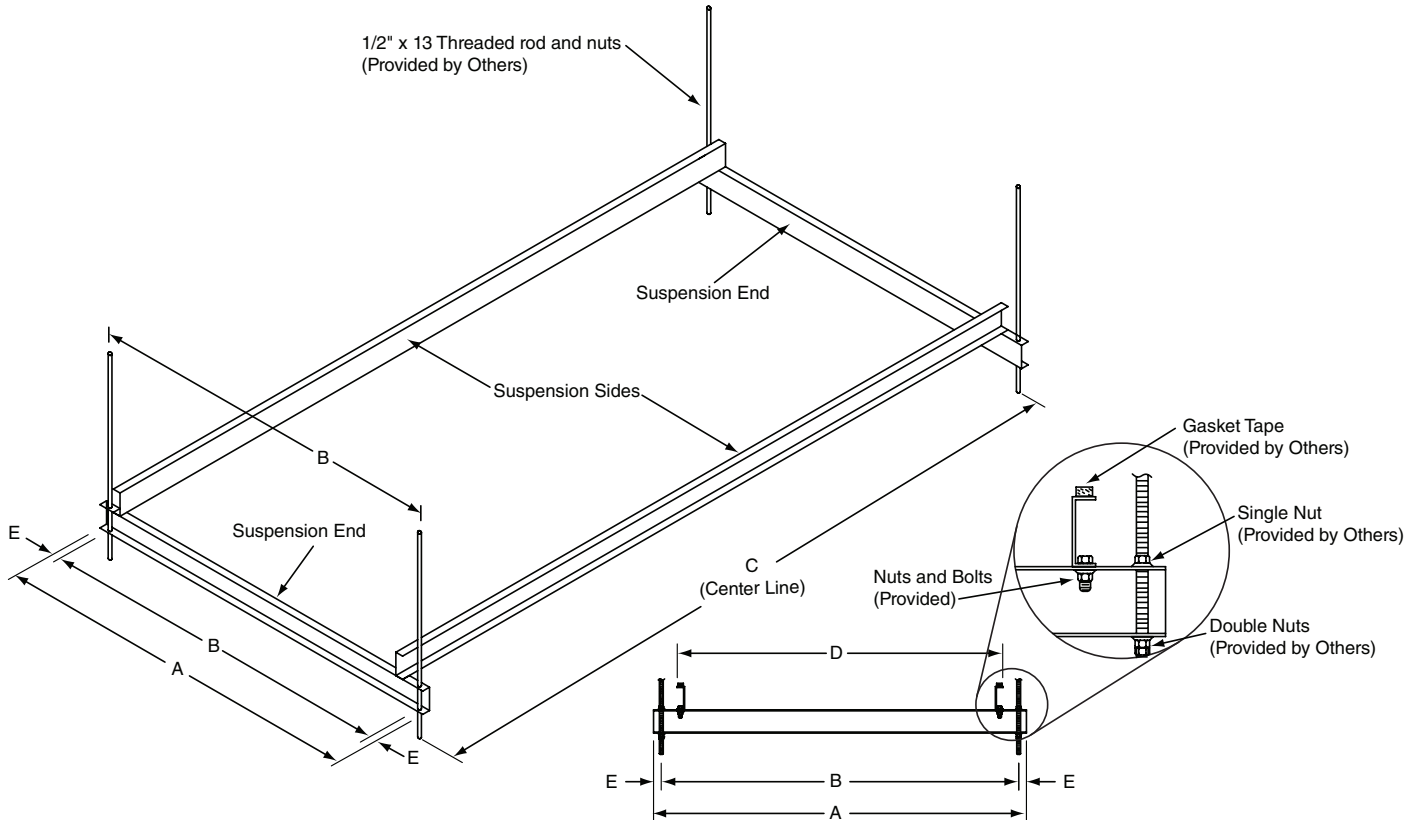
IMPORTANT NOTES:

- 1/4" angle iron construction.

2005 SUSPENSION KIT



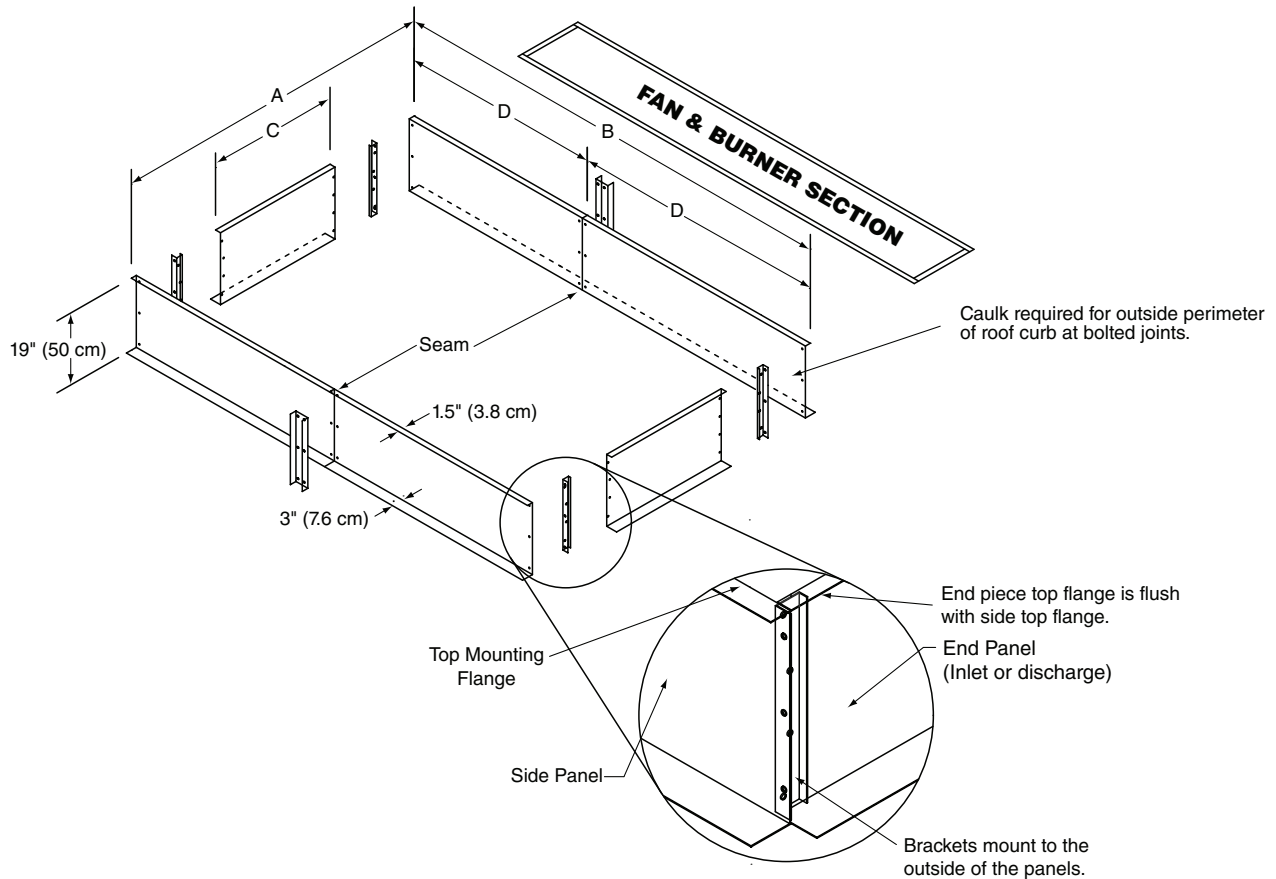
2010/2010B SUSPENSION KIT



SUSPENSION KIT DIMENSIONS

							WEIGHT	
MODEL		A	B	C	D	E	lbs	kg
2005	(in)	59.3	36.5	N/A	N/A	N/A	13.0	5.9
	(cm)	73.0	84.1					
2010/2010B	(in)	48.0	46.0	90.0	42.0	1.0	140.0	63.5
	(cm)	121.9	116.8	228.6	106.7	2.5		

2005 - 2050 ROOF CURB



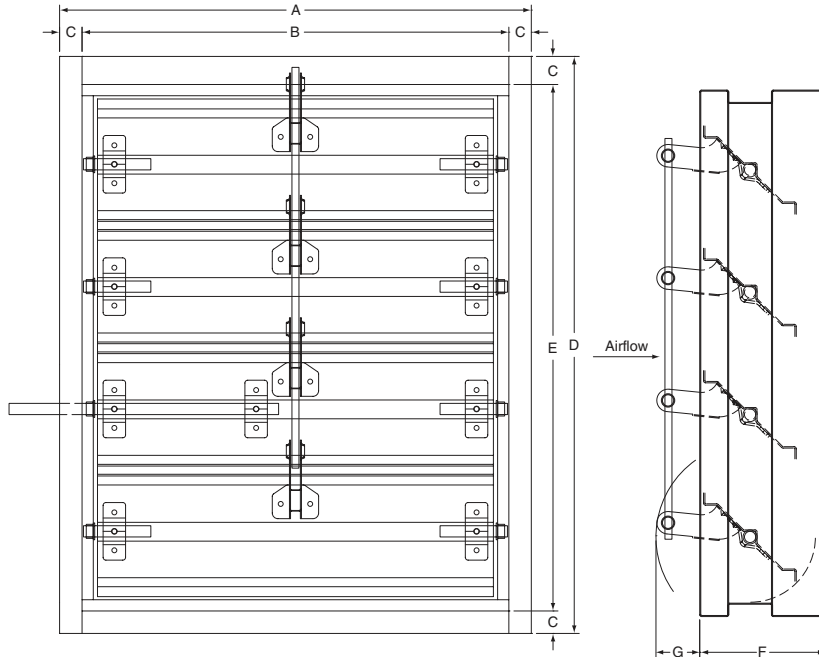
ROOF CURB DIMENSIONS

						WEIGHT	
MODEL		A	B	C	D	lbs	kg
2005	(in)	27.0	57.5	28.8	N/A	75.0	34.0
	(cm)	68.6	146.1	73.2			
2010/2010B	(in)	42.0	88.0	38.8	N/A	110.0	49.9
	(cm)	106.7	223.5	98.6			
2020	(in)	53.0	113.0	49.8	56.5	150.0	68.0
	(cm)	134.6	287.0	126.5	143.5		
2030	(in)	65.0	113.0	61.8	56.5	160.0	72.6
	(cm)	165.1	287.0	157.0	143.5		
2040/2050	(in)	98.0	157.7	94.8	78.8	267.0	121.1
	(cm)	248.9	400.7	240.8	200.3		

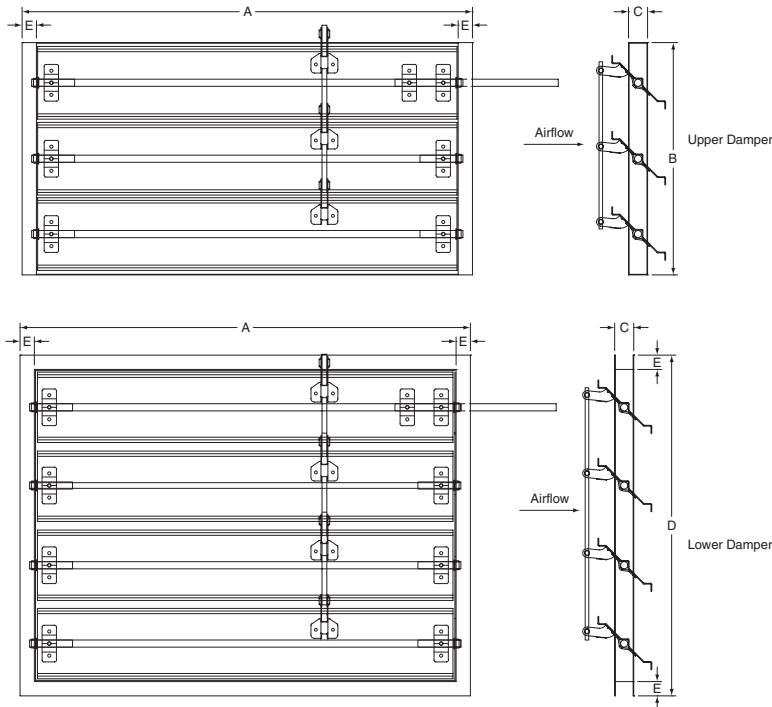
IMPORTANT NOTES:

- Curb is shipped unassembled.
- All dimensions are from the outside.
- Curb material is 16 gauge galvanized steel for 2005 - 2030 and 14 gauge galvanized steel for 2040 and 2050.
- Nuts and bolts (3/8" x 1") are furnished.
- Caulk all joints before assembling. (Caulk provided by others).
- 2020 - 2050 have seam in roof curb.
- When measuring dimensions A and B, include the top mounting flange width on both sides.

2005 - 2010B MOTORIZED INLET DAMPER



2020/2030 MOTORIZED INLET DAMPER



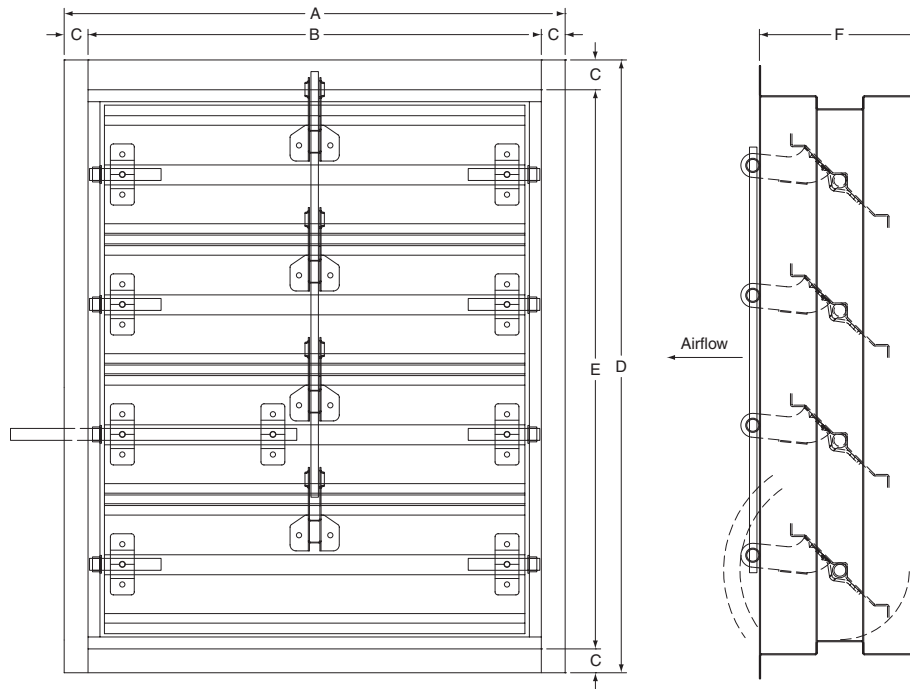
MODEL	DAMPER	WEIGHT*	
		lbs	kg
2020	UPPER	34.0	15.4
	LOWER	41.0	18.6
2030	UPPER	46.0	20.9
	LOWER	61.0	27.7

MOTORIZED INLET DAMPER DIMENSIONS

MODEL		A	B	C	D	E	F	G	WEIGHT	
									lbs	kg
2005	(in)	21.0	19.0	1.3	25.7	23.4	5.0	3.3	40.0	18.1
	(cm)	53.3	48.3	3.3	65.2	59.5	12.7	8.3		
2010/ 2010B	(in)	33.3	30.8	1.3	29.0	26.3	5.0	3.3	60.0	27.2
	(cm)	84.5	78.1	3.2	73.7	66.7	12.7	8.3		
2020	(in)	47.3	24.4	2.0	29.5	1.5	N/A	N/A	*	*
	(cm)	120.0	63.0	5.1	74.9	3.8				
2030	(in)	59.3	24.4	2.0	33.5	1.5	N/A	N/A	*	*
	(cm)	150.6	63.0	5.1	85.1	3.8				

*Refer to chart above for 2020 and 2030 weights.

2005 - 2030 MOTORIZED DISCHARGE DAMPER



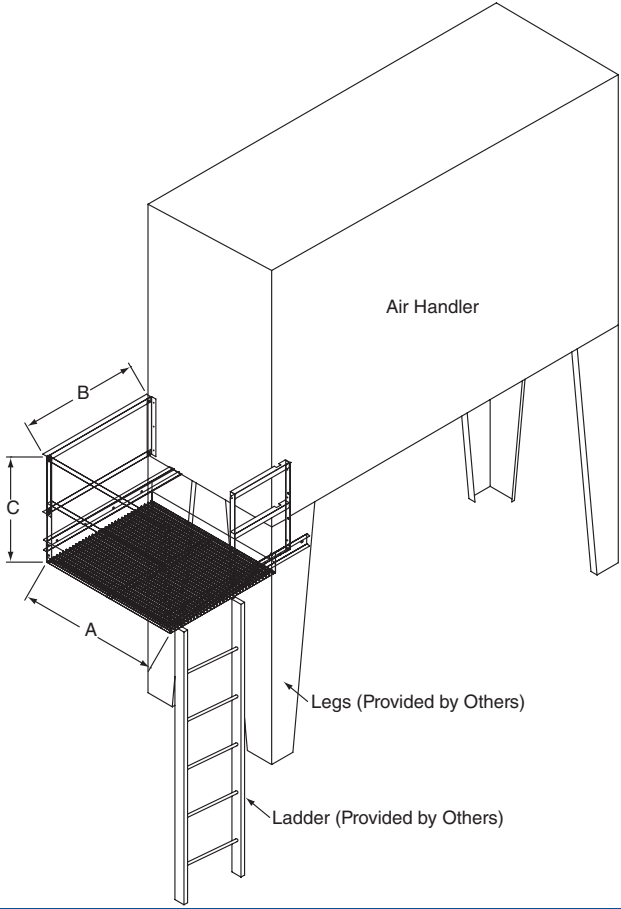
MOTORIZED DISCHARGE DAMPER DIMENSIONS

								WEIGHT	
MODEL		A	B	C	D	E	F	lbs	kg
2005	(in)	21.0	19.0	1.0	19.0	17.0	9.0	40.0	18.1
	(cm)	53.3	48.3	2.5	48.3	43.2	22.9		
2010/ 2010B	(in)	27.0	25.0	1.0	23.5	21.5	8.0	60.0	27.2
	(cm)	68.6	63.5	2.5	59.7	54.6	20.3		
2020	(in)	37.0	34.0	1.5	36.0	33.0	10.0	100.0	45.4
	(cm)	94.0	86.4	3.8	42.0	83.8	25.4		
2030	(in)	42.0	39.0	1.5	42.0	39.0	10.0	150.0	68.0
	(cm)	106.7	99.1	3.8	106.7	99.1	25.4		

IMPORTANT NOTES:

- Number of louvers will vary by model.
- Inlet dampers are mounted upstream of the air handler, directly to the air handler.
- Inlet dampers also available to ship loose.
- Inlet dampers for MUA style use both the upper and lower dampers for 2020 and 2030.
- Inlet dampers for FR, AM and VAV styles only use the upper damper for 2020 and 2030.
- Discharge dampers do not mount directly to the air handler; they mount downstream of the air handler in ductwork.

2040/2050 SERVICE PLATFORM



SERVICE PLATFORM DIMENSIONS

					WEIGHT	
MODEL		A	B	C	lbs	kg
2040/2050	(in) (cm)	57.0 144.8	49.0 124.5	43.0 109.2	325.0	147.0

Installation Code and Annual Inspections:

All installation and service of RAPID™ equipment must be performed by a contractor qualified in the installation and service of equipment sold and supplied by Rapid Engineering LLC and conform to all requirements set forth in the Rapid Engineering LLC manuals and all applicable governmental authorities pertaining to the installation, service and operation of the equipment. To help facilitate optimum performance and safety, Rapid Engineering LLC recommends that a qualified contractor conduct, at a minimum, annual inspections your RAPID™ equipment and perform service where necessary, using only replacement parts sold and supplied by Rapid Engineering LLC.

Further Information: Applications, engineering and detailed guidance on systems design, installation and equipment performance is available through RAPID™ representatives. Please contact us for any further information you may require, including the Installation, Operation and Service Manual.

These products are not for residential use.

This document is intended to assist licensed professionals in the exercise of their professional judgment.

Rapid Engineering LLC

1100 Seven Mile Road NW
 Comstock Park, MI 49321
 Telephone: +1.616.784.0500
 Toll Free: 800.536.3461
 Fax: +1.616.784.1910

www.rapidengineering.com

© 2010 Rapid Engineering LLC

All rights reserved. No part of this work covered by the copyrights herein may be reproduced or copied in any form or by any means – graphic, electronic, or mechanical, including photocopying, recording, taping, or information storage and retrieval systems – without written permission of Rapid Engineering LLC.